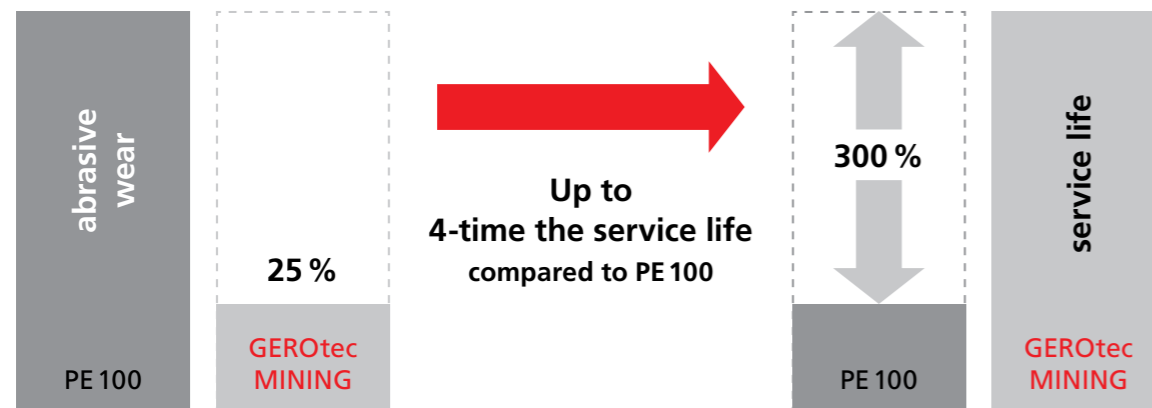


GEROtec MINING – a pipe for rough work.

Conventional media pipes made of PE 100 or PE 100-RC have been optimised for long-term operation for transporting gas, drinking water or waste water. These outstanding pipe properties are complemented by the integration of an abrasion-resistant inner layer of thermoplastic elastomer.



Pipes of the GEROtec MINING system group ensure efficient use in industrial, plant and mining applications due to their high resistance to abrasion.

All information in this folder has been carefully compiled. However, no liability can be derived from this. Schematic representations are for illustrative purposes only and do not necessarily have to be true to scale. Errors and technical changes reserved.
Photos: © fotolia, Gerodur

GEROtec MINING KEEPS TRANSPORTING.



Robust, high-performing, economical

Compared to materials traditionally used in industry, plant construction and mining, such as steel or rubber, abrasion-resistant pipes made of PE are highly economical.

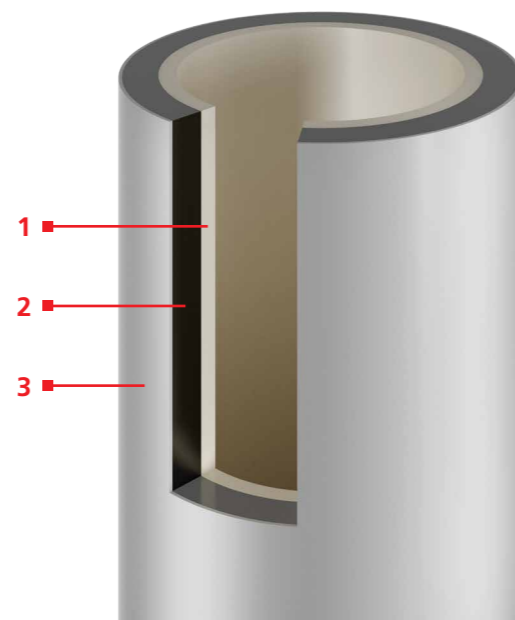


Due to low material costs and low installation costs, the investment costs can be minimized with the use of the GEROtec MINING pressure pipe system already during the initial installation of industrial pipes.

Long service lives due to low abrasive wear as well as the thermal and UV stability of GEROtec MINING pipes ensure a long service life and therefore low operating and maintenance costs.

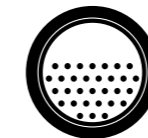
A long service life with GEROtec MINING

1. Dimensionally integrated internal protective layer of thermoplastic elastomer for long-term exposure to abrasive wear during the transport of media containing solids
2. PE 100 or PE 100-RC core layer
3. Dimensionally integrated, co-extruded outer layer of UV-stabilised PE 100 or PE 100-RC in a bright colour for low thermal stress on the system pipe



What are the advantages for you?

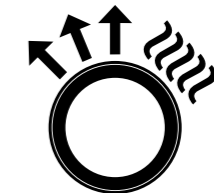
- | | | | |
|---|-------|------------------------------------|---|
| ■ Low abrasive wear | ▶ ▶ ▶ | Long service life during operation | ■ |
| ■ Good processing and handling capabilities | ▶ ▶ ▶ | Short installation/assembly times | ■ |
| ■ Enhanced heat reflection | ▶ ▶ ▶ | Low thermal pipe stress | ■ |
| ■ Inner layer suitable for inspection | ▶ ▶ ▶ | Highly maintenance friendly | ■ |



abrasion-resistant



inspection-suitable



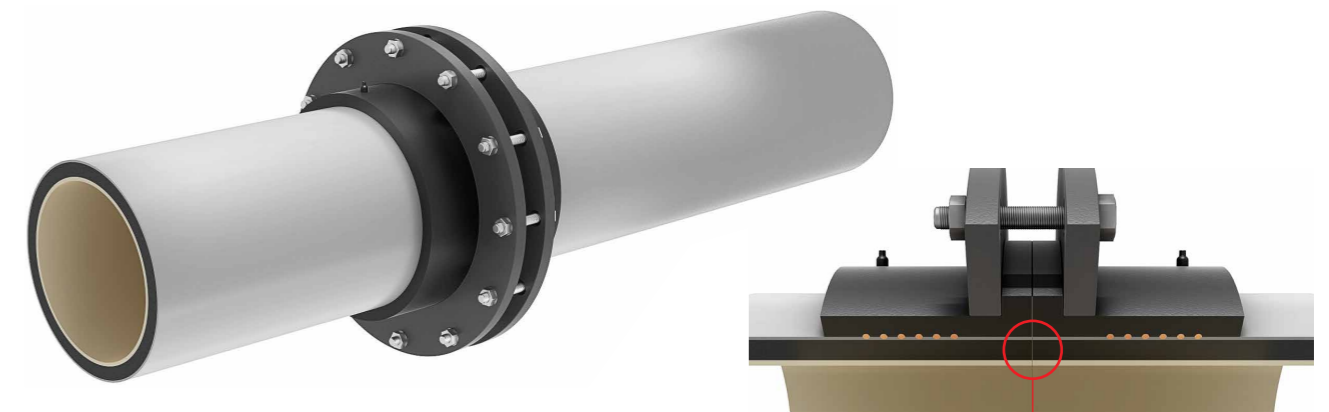
thermally reflective

Connection with system

When installing pressure pipes of the GEROtec MINING system, connections can be made using the electrofusion and butt welding processes as well as other techniques suitable for PE pipes.

As a system supplement, the necessary bends in the appropriate dimensions and bending angles are available for each project in order to ensure homogeneous material use of the entire pipeline.

GEROtec MINING weld-on flange



- detachable pipe connection
- Transition to other materials
- continuous abrasive-resistant inner layer

- Non-interrupted inner layer made of thermoplastic elastomer