

Ball Valves

Ready for any challenge

The product range with solutions for the widest variety of applications



Platform design with a modular
and compatible structure

Ball valve platform

When you have the choice to achieve the optimal solution



High-quality components are essential for a reliable and efficient operation of piping systems. That is why ball valves from GF Piping Systems are always the ideal solution. No matter whether in the chemical process industry, microelectronics, or water treatment: GF Piping Systems reliably covers a variety of applications with its broad product range. From a simple, manually operated shut-off valve to a fully automated ball valve – all our solutions offer genuine added value and meet the highest performance and quality requirements, without compromise.



+ Variety

GF Piping Systems offers a wide range of different ball valves, available worldwide in different materials and dimensions.

+ High quality means durability

State-of-the-art production and testing facilities ensure uncompromising quality - they make an important contribution to always guaranteeing high quality and a long service life.

+ Modularity

The modular construction of the ball valve platform enables GF Piping Systems to offer a flexible solution for changing demands, allowing a manual valve to be easily retrofitted with accessories or actuators or replaced.

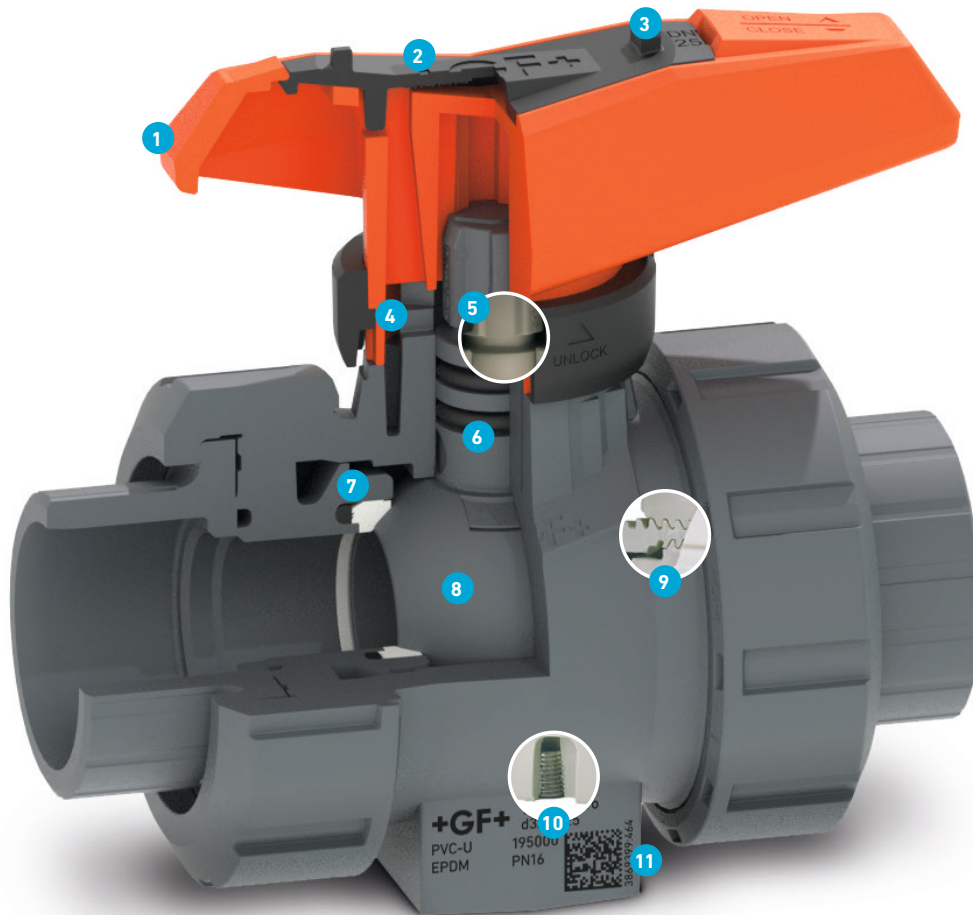
+ User-friendly

The ergonomic form of the ball valve lever from GF Piping Systems enables user-friendly operation. In addition, its well-known design makes it easy to recognize exceptional quality instantly.



Swiss precision and attention to detail

The ball valves from GF Piping Systems do not compromise on safety. Special design features ensure high reliability and long service life. For example, there are no metal components in areas that are in contact with the medium that could corrode during use. A predetermined break point integrated in the stem interface prevents leaks due to wear or excessive force. Two o-rings integrated into the stem interface provide maximum protection.



Product features

- 1 Ergonomic lever, lockable as standard
- 2 Quick label on request
- 3 Integrated tool for the union bush
- 4 Interface for flexible automation and accessories
- 5 Reinforced security break point in the stem interface
- 6 Double stem seals
- 7 Dynamic backing seal
- 8 Smooth spherical surface
- 9 Sawtooth thread suitable for plastics
- 10 Fastening system with integrated threaded bushes
- 11 Data matrix code



Superior quality for a wide range of applications

GF Piping System's ball valve product range is designed to meet every individual requirement. This is guaranteed by different connection units as well as the processing of various plastics and the large range of optional accessories. This versatile offering provides the right solution for any need, ensuring superior quality for a wide range of applications.



Connection units

Sockets, nozzles, flanges, threads: The connection and fastening elements are as varied as the range of ball valves. No matter what your requirements, we offer the perfect solution.



Material

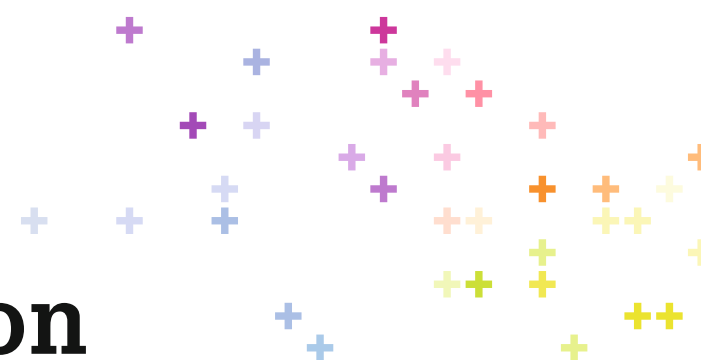
All ball valve types from GF Piping Systems are made of high-quality plastic. PVC-U, PVC-C, ABS, PP-H, and PVDF are not only light and low maintenance, they are also easy to use.

Accessories

Depending on the type of ball valve, a wide range of accessories can be used: For the 546 Pro, for example, we offer an electrical feedback with LED display or a manual spring return lever.

**More information in our
product catalog**
www.gfps.com

Ball valves for manual operation



Type 546 Pro The original just got better



10-100 10/16

The 546 Pro is the new generation of ball valves. A lockable lever as standard, data matrix code, and modular design guarantee long-term sustainability.

Recommended for

The ball valve 546 Pro meets every challenge and application, be it simple water applications or complicated processes in the chemical industry, microelectronics, measurement and control technology, or the food and beverage industry.

Options

- Materials: PVC-U, PVC-C, PP-H, ABS, PVDF
- Can be upgraded with pneumatic or electric actuators
- Accessories:
 - Manual spring return lever
 - Electrical feedback, incl. LED display
 - Different labeling options

Type 546 linear Perfectly in control



15-50 10

The linear ball valve type 546 enables uncomplicated control, even in complex processes, thanks to its linear flow characteristics. Its areas of application are unlimited, due to the variety of materials available.

Recommended for

The linear ball valve 546 is particularly suitable for use as a control valve. Its linearly increasing flow rate simplifies and control of processes.

Options

- Materials: PVC-U, PVC-C, PP-H, ABS, PVDF
- Spacers maintain a constant level in the piping system and make installation easier
- Minimal dead spaces

Dimension DN

Nominal pressure PN



Type 542

Opens up new perspectives



10-50 10/16

The manual ball valve type 542 offers uncompromising quality and is available in various materials and connection variants.

Recommended for

From simple water applications to manual applications in demanding processes.

Options

- Materials: PVC-U, PVC-C, PP-H
- Ball seals: PE (blue lever) / PTFE (red lever)

Type 543

Mixing and distribution made easy



10-50 10/16

Redirecting, mixing, distributing, or even shutting off a medium in areas of application such as the chemical process industry, microelectronics, or measurement and control technology.

Recommended for

The ball valve type 543 is the ideal valve for all mixing and distribution processes. It is available in a variety of horizontal and vertical versions, allowing many different application options.

Options

- Ball with L- / T-bore
- 90° stop as standard; 180° stop on request
- Very good flow properties

Type 523

Unparalleled precision



10-15 10/16

Exact dosing of small quantities is the strength of the metering ball valve type 523. Its circular scale and specially shaped ball enable the precise dosing of media.

Recommended for

Small volumes for which a linear flow is to be generated and a sudden increase in flow should be avoided.

Options

- Ideal metering valve
- Dimension range DN10 and DN15
- The circular scale facilitates exact dosing
- Low maintenance
- Virtually linear flow

Ball valves with automatic operation



Type 127 Consistently reliable



The ball valve type 127 consists of the ball valve type 546 Pro and the electric actuator EA15. It offers proven high level of modularity and reliability.

Recommended for

Standard applications without specific requirements. The ball valve type 127 is suitable for a wide range of uses.

Options

- Electrical feedback with additional limit switches
- Positioner for 90° and 180° angles
- Integrated emergency manual override
- Optional: Reset unit

Type 179 – 184 Highly adaptable



The 179–184 series comprises modularly expandable ball valves with a wide range of applications. All models consist of the 546 Pro valve and electric actuator.

Recommended for

Applications with specific process requirements, such as in the chemical process industry and microelectronics.

Options

- Electrical feedback with additional limit switches
- Rotation angle up to 355°; preset to 0–90°
- Integrated emergency manual override
- Up to three selectable positions

Type 167 – 170 The 3-way solution



The valves in the 167–170 series have a 3-way ball valve type 543 that is fitted with an electric actuator (EA25, EA45, EA120, or EA250).

Recommended for

Redirecting, mixing, distributing, or even shutting off a medium in applications such as in microelectronics.

Options

- Integrated emergency manual override
- Integrated, feedback on open/closed/middle
- Integrated threaded bushes for the fastening of the valve
- Optional accessories for reset unit with integrated battery





Type 230 – 235

With the best actuator



10-100 16

The 230–235 series features the modular ball valve type 546 Pro. Fitted with the pneumatic actuators PA11 and PA21, they offer an impressive lightweight and compact design with a broad range of applications.

Recommended for

For a variety of applications that require maximum process reliability.

Options

- Electrical feedback, even with manual operation of the valve
- Optional emergency manual override
- Compact design and modular construction
- Long service life with more than 25,000 actuating cycles
- Pressure connector based on NAMUR standard

Type 285 – 288

Optimal mixing and distributing



10-50 10

Ball valves 285–288 are comprised of the 3-way ball valve type 543 and pneumatic actuators PA11 and PA21. Compact design and optimal modularity for specialized mixing and distribution processes.

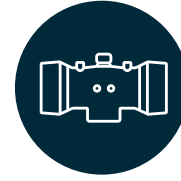
Recommended for

Applications with specific process requirements, for example in the chemical process industry, water treatment, microelectronics, and the food and beverage industry.

Options

- Compact design and modular construction
- Pressure connector based on NAMUR standard
- Preloaded spring packages, standard version FC, DA (FO on request)
- Short switching time
- For FC/FO stroke limitation possible

Driven to maximum performance



The new pneumatic and electric actuators from GF Piping Systems help to make processes more efficient and reduce maintenance costs. Where appropriate, they also contribute to digitization by making it easier to access process and component data and use it to optimize the system. The Ball Valve 546 Pro drives you to maximum performance.

Electric actuator for more efficiency in the work process

The electric actuator makes full use of the possibilities of digitization: It makes it easy to identify and confirm each valve position and to check the system status. Complete monitoring and control are possible via an app on a smartphone or tablet. Thanks to its standardized mechanical interfaces, the electric actuator can be mounted on any standard valve.

- + Access to relevant data
- + 360° LED display
- + Wireless activation

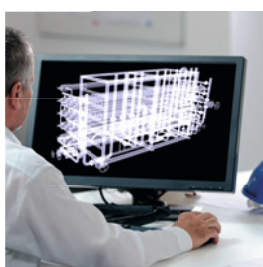


Services of GF Piping Systems

Optimal planning, installation and operation

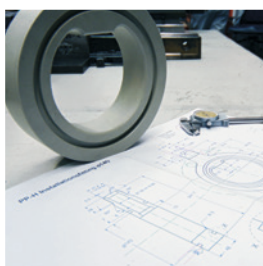
The specialists at GF Piping Systems support you throughout all phases of your project. They help you to optimally plan, install and operate your plastic piping system. Therefore, they reduce unnecessary time and material losses for you and keep downtimes and other risks as short as necessary.

Recommended services



Engineering

We check the design of your piping system, support you with the choice of materials and components as well as with the correct installation. Our 60 years of experience with plastic systems help you to reduce your own risks.



Customizing

Customized special parts and solutions for special tasks are available in all required dimensions. Even unusual applications in challenging installation scenarios can be implemented easily, safely and on time.



Digital Product Libraries

The digital product libraries by GF Piping Systems allow planning with real-life dimensions and automatically generated parts lists, facilitating digital cooperation. They help reduce planning errors and shorten your project times.



Next steps

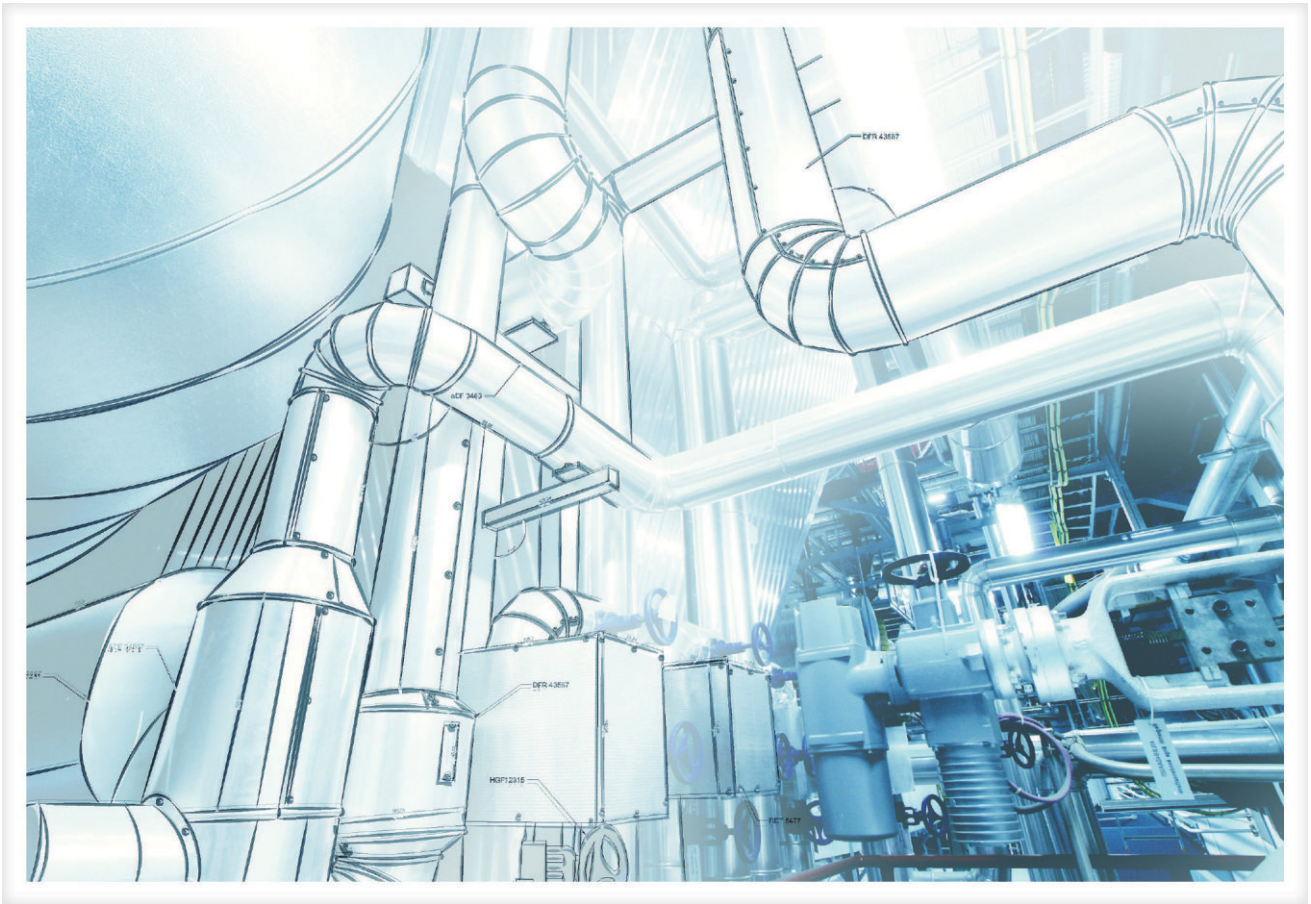
In this brochure you have received the most important information and technical details. But nothing replaces a personal conversation with an expert from GF Piping Systems. It is all about your needs and how we can support you in your daily business challenges. If you have not already done so, make an appointment today.

On the GF Piping Systems website you will find specialized contact persons in your area. There you will also find further information on the product, including technical data sheets and operating instructions as well as relevant certificates and approvals.

- Appointment with an expert from GF Piping Systems
- Advice on the benefits of the solution for you
- Information on reference applications
- Help with selection and calculations
- Support in all project phases

More information at
www.546.gfps.com



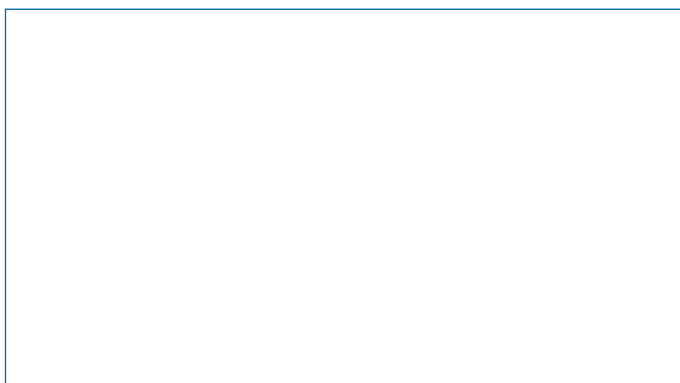


GF Africa **Contact Details**

T. + 27 21 702 0059

E. info@gf-africa.com

W. www.gf-africa.com



Authorised Distributor



SCAN ME