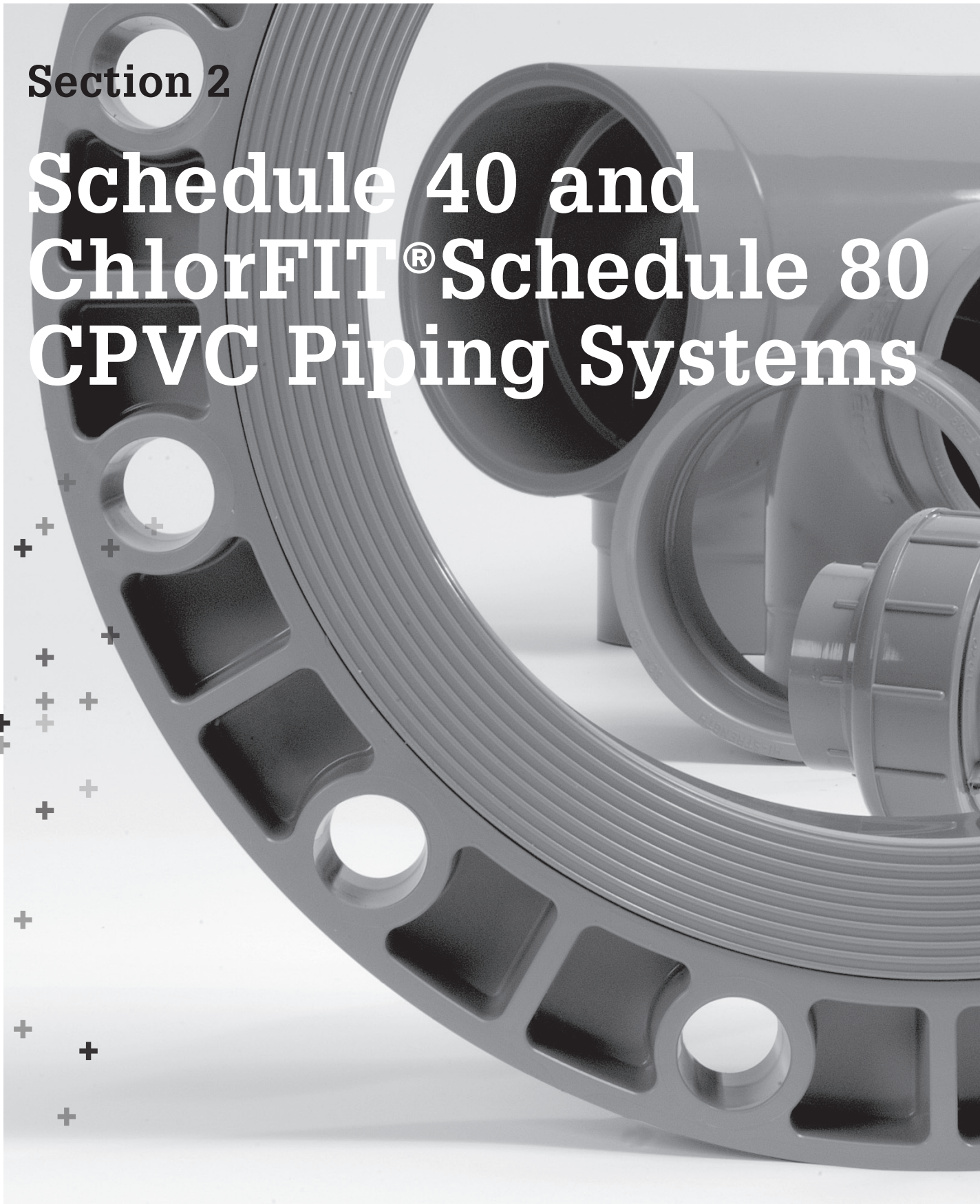


Section 2

**Schedule 40 and
ChlorFIT® Schedule 80
CPVC Piping Systems**



Glossary

FPT	=	Female Pipe Thread
MPT	=	Male Pipe Thread
S	=	Tapered Socket
SPG	=	Spigot End (same dimension as pipe outside diameter)
*	=	Non-Returnable / Non-cancellable
^	=	40% Restocking Fee
HS	=	High Strength Design
SL	=	Streamline Design
BUSH	=	Assembled Fitting from Molded Components
FAB	=	Fabricated Fitting

The technical information given in this publication implies no warranty of any kind and is subject to change without notice. Please consult our Terms and Conditions of Sale.

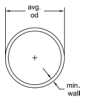
For complete technical information, please consult the Vinyl Catalog and Technical Information

For more information about any of our product lines, please visit www.gfps.com



Schedule 40 CPVC Pressure Pipe

145



ChlorFIT® Schedule 80 CPVC Pressure Pipe

146



ChlorFIT® Schedule 80 CPVC Pressure Fittings

147



ChlorFIT® Schedule 80 CPVC DWV Fittings

167



ChlorFIT® Schedule 80 CPVC Metal Transition Fittings

170



ChlorFIT® Schedule 80 CPVC Expansion Joints

173

Specifications, Standards and Tolerances

Specifications and Standards

NSF/ANSI Standard 14

NSF/ANSI Standard 61

ASTM D 1784 : Material CPVC Type IV, Grade I Gray (cell classification 23447) – Pipe & Fittings

ASTM F 441 : CPVC Schedule 40 and Schedule 80 Pipe

ASTM F 439 : CPVC Schedule 80 Socket & Threaded Fittings

ASTM F 437 : CPVC Schedule 80 Threaded Fittings

ASTM F 1970 : CPVC Schedule 80 Unions

ANSI B16.5 : Flange Bolt Hole Patterns

ANSI B1.20.1 : CPVC Schedule 80 NPT Threads

CSA B137.6 : CPVC Schedule 80 Pipe (1¼"–2½" only)

ULC S102.2 : CPVC Schedule 40 Pipe (½"–24"); Schedule 80 Pipe (½"–12")

Molded Dimension Tolerances

A Piston Position; Expansion Joints : ± 0.03

D Outside Diameter : ± 0.06

G, G1 Intersections of centerlines to bottom of socket; 90° Ells, Tees : up to 4" ± 0.03 ; 6" and above ± 0.06

GJ, GN Intersections of centerlines to bottom of socket; 45° Wyes : up to 4" ± 0.03 ; 6" and above ± 0.06

H, HJ, HN Intersections of centerlines to face of fitting; 90° Ells, 45° Ells, Tees, 45° Wyes : up to 4" ± 0.03 ; 6" and above ± 0.06

HL Socket Bottom to Face of Fitting : up to 4" ± 0.03 ; 6" and above ± 0.06

J Intersections of centerlines to bottom of socket; 45° & 30° Ells : up to 4" ± 0.03 ; 6" and above ± 0.06

L Overall Length of fitting : ± 0.06

N Socket Bottom to Socket Bottom; Couplings, Unions : ± 0.06

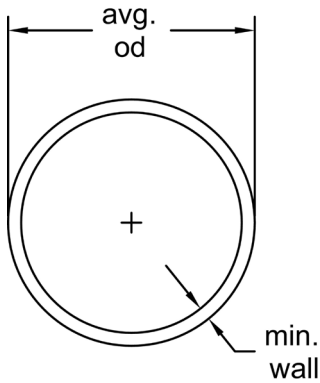
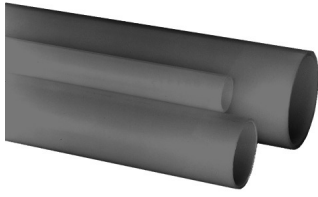
N1 Socket Bottom to Face of Flange : ± 0.06

R Thickness on Plugs, Flanges : ± 0.03

T, T1 Effective Thread Length : Reference Only

W Height of Cap : ± 0.06

Schedule 40 CPVC Pressure Pipe

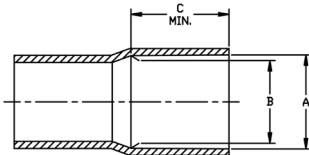


Harvel Plain End Pipe - 20 Ft Lengths

- Max Water Pressure at 73°F (22.7°C) with solvent-cemented joints

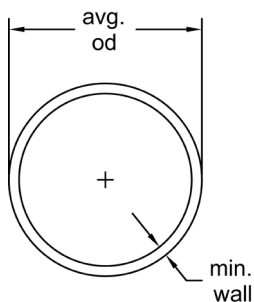
Size (inch)	P/L	Plain End Part No.	Lift Qty. (20ft Lgths) (ft)	Average O.D. (inch)	min. wall (inch)	Wt/Ft (lbs/ft)	Max Water Pressure (psi)
¼	H23	H0400025CG2000	5700	0.540	0.088	0.091	780
⅜	H23	H0400038CG2000	5700	0.675	0.091	0.122	620
½	H23	H0400050CG2000	5700	0.840	0.109	0.180	600
¾	H23	H0400075CG2000	5260	1.050	0.113	0.239	480
1	H23	H0400100CG2000	4280	1.315	0.133	0.352	450
1 ¼	H23	H0400125CG2000	2360	1.660	0.140	0.475	370
1 ½	H23	H0400150CG2000	2060	1.900	0.145	0.568	330
2	H23	H0400200CG2000	1660	2.375	0.154	0.761	280
2 ½	H23	H0400250CG2000	1080	2.875	0.203	1.201	300
3	H23	H0400300CG2000	840	3.500	0.216	1.572	260
3 ½	H23	H0400350CG2000	680	4.000	0.226	1.905	240
4	H23	H0400400CG2000	520	4.500	0.237	2.239	220
5	H23	H0400500CG2000	400	5.563	0.258	3.095	190
6	H23	H0400600CG2000	340	6.625	0.280	3.945	180
8	H23	H0400800CG2000	220	8.625	0.322	5.958	160
10	H23	H0401000CG2000	80	10.750	0.365	8.458	140
12	H23	H0401200CG2000	60	12.750	0.406	11.172	130
14	H23	H0401400CG2000	60	14.000	0.437	13.262	130
16	H23	H0401600CG2000	60	16.000	0.500	17.312	130
18	H23	H0401800CG2000	40	18.000	0.562	0.586	130
20	H23	H0402000CG2000	40	20.000	0.593	26.530	120
24	H23	H0402400CG2000	40	24.000	0.687	36.916	120

Harvel Belled End Pipe - 20 Ft Length Less Bell



Size (inch)	P/L	Belled End Part No.	A-Socket Entrance (Belled Pipe)	B-Socket Bottom (Belled Pipe)	C-Min. (Belled Pipe)
½	H23	H0400050CG200B	0.848±0.004	0.836±0.004	1.000
¾	H23	H0400075CG200B	1.058±0.004	1.046±0.004	1.250
1	H23	H0400100CG200B	1.325±0.005	1.310±0.005	1.500
1 ¼	H23	H0400125CG200B	1.670±0.005	1.655±0.005	1.750
1 ½	H23	H0400150CG200B	1.912±0.005	1.894±0.006	2.000
2	H23	H0400200CG200B	2.387±0.006	2.363±0.006	2.250
2 ½	H23	H0400250CG200B	2.889±0.007	2.861±0.007	2.500
3	H23	H0400300CG200B	3.516±0.008	3.484±0.008	3.250
3 ½	H23	H0400350CG200B	4.016±0.008	3.984±0.008	3.500
4	H23	H0400400CG200B	4.518±0.009	4.482±0.009	4.000
5	H23	H0400500CG200B	5.583±0.010	5.543±0.010	4.000
6	H23	H0400600CG200B	6.647±0.011	6.603±0.011	6.000
8	H23	H0400800CG200B	8.655±0.015	8.598±0.015	6.000
10	H23	H0401000CG200B	10.776±0.015	10.722±0.015	7.500
12	H23	H0401200CG200B	12.778±0.015	12.721±0.015	8.500
14	H23	H0401400CG200B	14.035±0.015	13.985±0.015	9.000
16	H23	H0401600CG200B	16.045±0.015	15.980±0.015	10.000
18	H23	H0401800CG200B	18.055±0.020	17.980±0.020	12.000
20	H23	H0402000CG200B	20.065±0.025	19.980±0.025	12.000
24	H23	H0402400CG200B	24.075±0.030	23.970±0.030	12.000

ChlorFIT® Schedule 80 CPVC Pressure Pipe

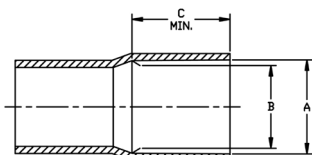


Schedule 80 CORZAN® CPVC Plain End Pipe - 20 Ft Lengths

- Max Water Pressure at 73°F (22.7°C) with solvent-cemented joints

Size (inch)	P/L	Plain End Part No.	Lift Qty (ft)	Average O.D. (inch)	min. wall (inch)	Wt/Ft (lbs/ft)	Max Water Pressure (psi)
¼	H06	H0800025CG2000	5700	0.540	0.119	0.112	1130
¾	H06	H0800038CG2000	5700	0.675	0.126	0.154	920
½	H06	H0800050CG2000	5700	0.840	0.147	0.225	850
¾	H06	H0800075CG2000	5260	1.050	0.154	0.305	690
1	H06	H0800100CG2000	4280	1.315	0.179	0.449	630
1 ¼	H06	H0800125CG2000	2360	1.660	0.191	0.618	520
1 ½	H06	H0800150CG2000	2060	1.900	0.200	0.751	470
2	H06	H0800200CG2000	1660	2.375	0.218	1.040	400
2 ½	H06	H0800250CG2000	1080	2.875	0.276	1.584	420
3	H06	H0800300CG2000	840	3.500	0.300	2.124	370
3 ½	H06	H0800350CG2000	680	4.000	0.318	2.607	350
4	H06	H0800400CG2000	520	4.500	0.337	3.105	320
5	H06	H0800500CG2000	400	5.563	0.375	4.343	290
6	H06	H0800600CG2000	340	6.625	0.432	5.929	280
8	H06	H0800800CG2000	220	8.625	0.500	9.051	250
10	H06	H0801000CG2000	80	10.750	0.593	13.429	230
12	H06	H0801200CG2000	60	12.750	0.687	18.458	230
14	H06	H0801400CG2000	60	14.000	0.750	22.224	220
16	H06	H0801600CG2000	60	16.000	0.843	28.557	220
18	H06	H0801800CG2000	40	18.000	0.937	35.745	220
20	H06	H0802000CG2000	40	20.000	1.031	45.022	220
24	H06	H0802400CG2000	40	24.000	1.218	63.878	210

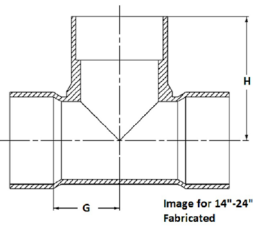
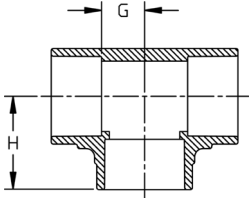
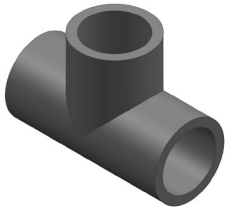
Schedule 80 CORZAN® CPVC Belled End Pipe - 20 Ft. Length Less Bell



Size (inch)	P/L	Belled End Part No.	A-Socket Entrance (Belled Pipe)	B-Socket Bottom (Belled Pipe)	C-Min. (Belled Pipe)
½	H06	H0800050CG200B	0.848±0.004	0.836±0.004	1.000
¾	H06	H0800075CG200B	1.058±0.004	1.046±0.004	1.250
1	H06	H0800100CG200B	1.325±0.005	1.310±0.005	1.500
1 ¼	H06	H0800125CG200B	1.670±0.005	1.655±0.005	1.750
1 ½	H06	H0800150CG200B	1.912±0.006	1.894±0.006	2.000
2	H06	H0800200CG200B	2.387±0.006	2.363±0.006	2.250
2 ½	H06	H0800250CG200B	2.889±0.007	2.861±0.007	2.500
3	H06	H0800300CG200B	3.516±0.008	3.484±0.008	3.250
3 ½	H06	H0800350CG200B	4.016±0.008	3.984±0.008	3.500
4	H06	H0800400CG200B	4.518±0.009	4.482±0.009	4.000
5	H06	H0800500CG200B	5.583±0.010	5.543±0.010	4.000
6	H06	H0800600CG200B	6.647±0.011	6.603±0.011	6.000
8	H06	H0800800CG200B	8.655±0.015	8.598±0.015	6.000
10	H06	H0801000CG200B	10.776±0.015	10.722±0.015	7.500
12	H06	H0801200CG200B	12.778±0.015	12.721±0.015	8.500
14	H06	H0801400CG200B	14.035±0.015	13.985±0.015	9.000
16	H06	H0801600CG200B	16.045±0.015	15.980±0.015	10.000
18	H06	H0801800CG200B	18.055±0.020	17.980±0.020	12.000
20	H06	H0802000CG200B	20.065±0.025	19.980±0.025	12.000
24	H06	H0802400CG200B	24.075±0.030	23.970±0.030	12.000

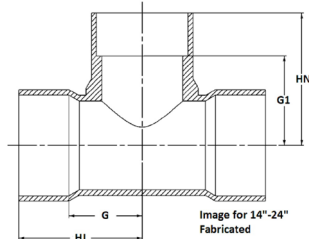
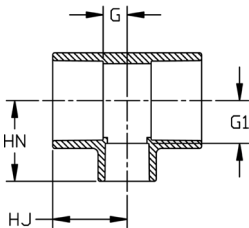
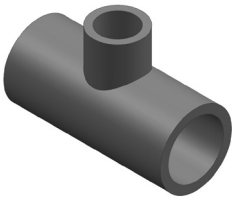
ChlorFIT® Schedule 80 CPVC Pressure Fittings

Tee (S x S x S) Schedule 80 CORZAN® CPVC



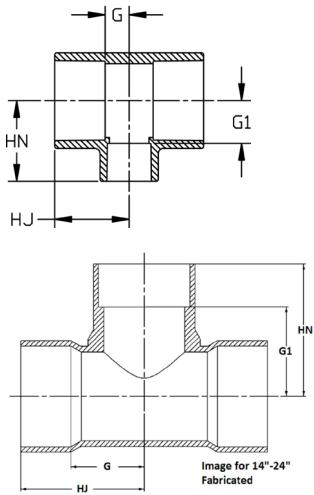
Size (inch)	P/L	Part No.	Pack Qty	H (inch)	G (inch)	Design
½	625	9801-005	25	1.41	0.51	SL
¾	625	9801-007	15	1.60	0.58	SL
1	625	9801-010	20	1.85	0.71	SL
1 ¼	625	9801-012	5	2.17	0.91	SL
1 ½	625	9801-015	5	2.43	1.04	SL
2	625	9801-020	5	2.81	1.30	SL
2 ½	625	9801-025	5	3.31	1.55	SL
3	625	9801-030	5	3.71	1.81	SL
4	625	9801-040	5	4.60	2.33	SL
6	625	9801-060	2	6.53	3.51	SL
8	625	9801-080	1	8.66	4.58	SL
10	B10	9801-100	1	10.79	5.78	SL
12	B10	9801-120	1	12.96	6.94	SL
14	A34	9801-140N	1	19.50	10.88	FAB
16	A34	9801-160N	1	22.75	12.13	FAB
18	A34	9801-180N	1	26.00	13.38	FAB
20	A34	9801-200N	1	28.25	14.63	FAB
24	A34	9801-240N	1	34.50	17.13	FAB

Reducing Tee (S x S x S) Schedule 80 CORZAN® CPVC



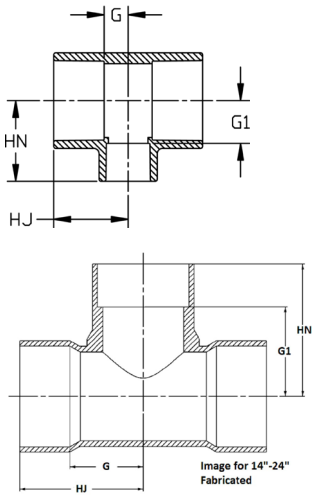
Size (inch)	P/L	Part No.	Pack Qty	HJ (inch)	HN (inch)	G (inch)	G1 (inch)	Design
¾ x ½	625	9801-101	25	1.62	1.62	0.60	0.72	SL
1 x ½	625	9801-130	25	1.87	1.64	0.72	0.74	SL
1 x ¾	625	9801-131	25	1.86	1.89	0.72	0.75	SL
1 ¼ x ½	625	9801-166FB	20	1.99	2.35	0.73	1.47	BUSH
1 ¼ x ¾	625	9801-167FB	20	1.99	2.35	0.73	1.33	BUSH
1 ¼ x 1	625	9801-168	20	2.01	2.05	0.73	0.91	SL
1 ½ x ½	625	9801-209	5	1.92	1.91	0.53	1.03	SL
1 ½ x ¾	625	9801-210	5	1.99	2.07	0.60	1.05	SL
1 ½ x 1	625	9801-211	5	2.12	2.17	0.72	1.03	SL
1 ½ x 1 ¼	625	9801-212FB	5	2.44	2.74	1.04	1.47	BUSH
2 x ½	625	9801-247	5	1.99	2.16	0.54	1.28	SL
2 x ¾	625	9801-248	5	2.22	2.31	0.60	1.30	SL
2 x 1	625	9801-249	5	2.24	2.42	0.72	1.27	SL
2 x 1 ¼	625	9801-250FB	5	2.81	3.11	1.30	1.84	BUSH
2 x 1 ½	625	9801-251	5	2.54	2.66	1.03	1.27	SL
2 ½ x ½	625	9801-287FB	5	3.05	3.35	1.28	2.44	BUSH
2 ½ x ¾	625	9801-288FB	5	3.05	3.35	1.28	2.33	BUSH
2 ½ x 1	625	9801-289FB	5	3.05	3.36	1.28	2.22	BUSH
2 ½ x 1 ¼	625	9801-290FB	5	3.05	3.34	1.28	2.07	BUSH
2 ½ x 1 ½	625	9801-291FB	5	3.05	3.35	1.28	1.94	BUSH
2 ½ x 2	625	9801-292	5	3.05	3.05	1.28	1.54	SL
3 x ½	625	9801-333FB	5	3.20	3.68	1.30	2.77	BUSH
3 x ¾	625	9801-334FB	5	3.20	3.68	1.30	2.66	BUSH
3 x 1	625	9801-335FB	5	3.20	3.69	1.30	2.55	BUSH
3 x 1 ¼	625	9801-336FB	5	3.20	3.67	1.30	2.40	BUSH
3 x 1 ½	625	9801-337FB	5	3.20	3.68	1.30	2.27	BUSH
3 x 2	625	9801-338	5	3.20	3.39	1.30	1.87	SL
3 x 2 ½	625	9801-339FB	5	3.73	4.07	1.81	2.17	BUSH
4 x ½	625	9801-415FB	5	3.52	4.19	1.27	3.28	BUSH
4 x ¾	625	9801-416FB	5	3.52	4.19	1.27	3.17	BUSH

table continued on the next page



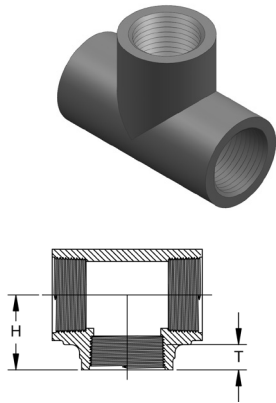
Size (inch)	P/L	Part No.	Pack Qty	HJ (inch)	HN (inch)	G (inch)	G1 (inch)	Design
4 x 1	625	9801-417FB	5	3.53	4.12	1.26	3.00	BUSH
4 x 1 ¼	625	9801-418FB	5	3.52	4.18	1.27	2.91	BUSH
4 x 1 ½	625	9801-419FB	5	3.52	4.19	1.27	2.78	BUSH
4 x 2	625	9801-420	5	3.54	3.87	1.27	2.37	SL
4 x 2 ½	625	9801-421FB	5	4.14	4.62	1.85	2.73	BUSH
4 x 3	625	9801-422	5	4.13	4.26	1.85	2.35	SL
6 x ½	625	9801-523FB	1	6.56	7.42	3.56	6.52	BUSH
6 x ¾	625	9801-524FB	1	6.56	7.43	3.49	6.41	BUSH
6 x 1	625	9801-525FB	2	6.56	7.44	3.49	6.29	BUSH
6 x 1 ¼	625	9801-526FB	2	6.56	7.42	3.49	6.15	BUSH
6 x 1 ½	625	9801-527FB	1	6.56	7.42	3.49	6.02	BUSH
6 x 2	625	9801-528	2	4.45	5.25	1.43	3.74	SL
6 x 2 ½	625	9801-529FB	2	6.56	7.52	3.49	5.62	BUSH
6 x 3	625	9801-530FB	2	6.56	7.21	3.49	5.25	BUSH
6 x 4	625	9801-532	2	6.57	6.80	3.49	4.47	HS
8 x 4	625	9801-582FB	1	7.63	8.09	3.59	5.84	BUSH
8 x 5	625	9801-583FB	1	7.58	8.01	3.49	5.37	FAB
8 x 6	625	9801-585	1	7.65	7.54	3.55	4.63	SL
10 x 2	A34	9801-619N	1	10.75	11.50	5.75	9.50	FAB
10 x 3	A34	9801-621N	1	10.75	11.50	5.75	9.50	FAB
10 x 4	A34	9801-623N	1	10.75	11.50	5.75	9.50	FAB
10 x 6	B10	9801-626FB	1	10.83	11.43	5.78	8.33	BUSH
10 x 6	A34	9801-626N	1	11.88	12.50	6.88	9.50	FAB
10 x 8	B10	9801-628FB	1	10.83	11.46	5.78	7.36	BUSH
10 x 8	A34	9801-628N	1	13.00	13.50	8.00	9.50	FAB
12 x 2	A34	9801-659N	1	12.00	12.75	6.00	10.75	FAB
12 x 3	A34	9801-661N	1	12.00	12.75	6.00	10.75	FAB
12 x 4	A34	9801-663N	1	12.00	12.75	6.00	10.75	FAB
12 x 6	A34	9801-666N	1	13.13	13.75	7.13	10.75	FAB
12 x 8	B10	9801-668FB	1	12.99	13.67	6.94	9.58	BUSH
12 x 8	A34	9801-668N	1	14.13	14.75	8.13	10.75	FAB
12 x 10	B10	9801-670FB	1	12.99	13.68	6.94	8.57	BUSH
12 x 10	A34	9801-670N	1	15.13	15.75	9.13	10.75	FAB
14 x 2	A34	9801-692N	1	13.13	13.50	6.13	11.50	FAB
14 x 3	A34	9801-694N	1	13.13	13.50	6.13	11.50	FAB
14 x 4	A34	9801-696N	1	13.13	13.50	6.13	11.50	FAB
14 x 6	A34	9801-698N	1	14.25	14.50	7.25	11.50	FAB
14 x 8	A34	9801-700N	1	15.25	15.50	8.25	11.50	FAB
14 x 10	A34	9801-702N	1	16.25	16.50	9.25	11.50	FAB
14 x 12	A34	9801-704N	1	17.25	18.50	10.25	12.50	FAB
16 x 2	A34	9801-726N	1	14.38	14.75	6.38	12.75	FAB
16 x 3	A34	9801-728N	1	14.38	14.75	6.38	12.75	FAB
16 x 4	A34	9801-730N	1	14.38	14.75	6.38	12.75	FAB
16 x 6	A34	9801-732N	1	15.50	15.75	7.50	12.75	FAB
16 x 8	A34	9801-734N	1	16.50	16.75	8.50	12.75	FAB
16 x 10	A34	9801-736N	1	17.50	17.75	9.50	12.75	FAB
16 x 12	A34	9801-738N	1	18.50	19.75	10.50	13.75	FAB
16 x 14	A34	9801-740N	1	19.13	20.75	11.13	13.75	FAB
18 x 4	A34	9801-784N	1	15.63	16.00	6.63	14.00	FAB
18 x 6	A34	9801-786N	1	16.75	17.00	7.75	14.00	FAB
18 x 8	A34	9801-788N	1	17.75	18.00	8.75	14.00	FAB
18 x 10	A34	9801-790N	1	18.75	19.00	9.75	14.00	FAB
18 x 12	A34	9801-792N	1	19.75	21.00	10.75	15.00	FAB
18 x 14	A34	9801-794N	1	20.38	22.00	11.38	15.00	FAB
18 x 16	A34	9801-796N	1	21.38	24.00	12.38	16.00	FAB
20 x 4	A34	9801-814N	1	16.88	17.25	6.88	15.25	FAB
20 x 6	A34	9801-816N	1	18.00	18.25	8.00	15.25	FAB
20 x 8	A34	9801-818N	1	19.00	19.25	9.00	15.25	FAB
20 x 10	A34	9801-820N	1	20.00	20.25	10.00	15.25	FAB
20 x 12	A34	9801-822N	1	21.00	22.25	11.00	16.25	FAB
20 x 14	A34	9801-824N	1	21.63	23.25	11.63	16.25	FAB
20 x 16	A34	9801-826N	1	22.63	25.25	12.63	17.25	FAB
20 x 18	A34	9801-828N	1	23.63	27.25	13.63	18.25	FAB

table continued on the next page



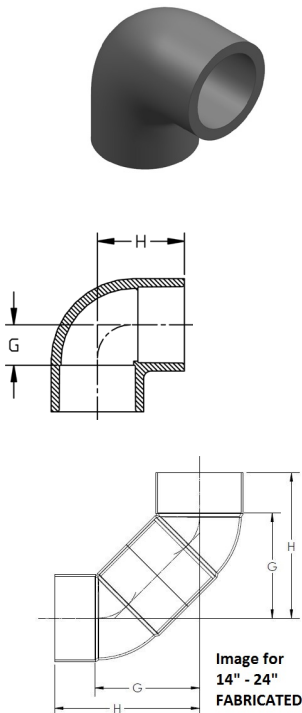
Size (inch)	P/L	Part No.	Pack Qty	HJ (inch)	HN (inch)	G (inch)	G1 (inch)	Design
24 x 4	A34	9801-904N	1	19.38	19.50	7.38	17.50	FAB
24 x 6	A34	9801-906N	1	20.50	20.50	8.50	17.50	FAB
24 x 8	A34	9801-908N	1	21.50	21.50	9.50	17.50	FAB
24 x 10	A34	9801-910N	1	22.50	22.50	10.50	17.50	FAB
24 x 12	A34	9801-912N	1	23.50	24.50	11.50	18.50	FAB
24 x 14	A34	9801-914N	1	24.13	25.50	12.13	18.50	FAB
24 x 16	A34	9801-916N	1	25.13	27.50	13.13	19.50	FAB
24 x 18	A34	9801-918N	1	26.13	30.50	14.13	20.50	FAB
24 x 20	A34	9801-920N	1	27.13	32.50	15.13	20.50	FAB

Tee (FPT x FPT x FPT) Schedule 80 CORZAN® CPVC



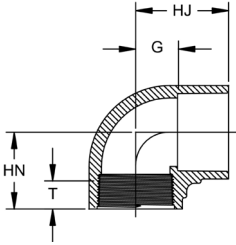
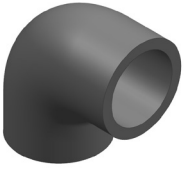
Size (inch)	P/L	Part No.	Pack Qty	H (inch)	T (inch)	Design
¼	625	9805-002	50	0.94	0.59	HS
⅜	625	9805-003	50	1.01	0.60	HS
½	625	9805-005	25	1.26	0.76	HS
¾	625	9805-007	15	1.36	0.72	HS
1	625	9805-010	15	1.79	0.99	HS
1 ¼	625	9805-012	10	1.93	1.01	HS
1 ½	625	9805-015	10	2.08	1.03	HS
2	625	9805-020	5	2.39	1.06	HS
2 ½	625	9805-025	5	2.87	1.35	HS
3	625	9805-030	5	3.52	1.65	HS
4	625	9805-040	5	4.07	1.72	HS

90° Ell (S x S) Schedule 80 CORZAN® CPVC



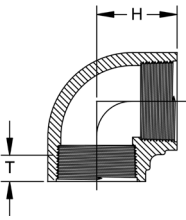
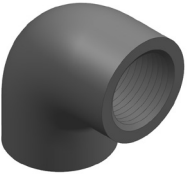
Size (inch)	P/L	Part No.	Pack Qty	H (inch)	G (inch)	Design
¼	625	9806-002	50	0.96	0.35	HS
½	625	9806-005	25	1.41	0.51	SL
¾	625	9806-007	25	1.60	0.57	SL
1	625	9806-010	10	1.83	0.68	SL
1 ¼	625	9806-012	10	2.18	0.90	SL
1 ½	625	9806-015	10	2.43	1.04	SL
2	625	9806-020	20	2.80	1.27	SL
2 ½	625	9806-025	5	3.33	1.53	SL
3	625	9806-030	5	3.73	1.81	SL
4	625	9806-040	5	4.63	2.32	SL
6	625	9806-060	2	6.56	3.53	SL
8	625	9806-080	1	8.68	4.55	SL
10	B10	9806-100	1	10.79	5.77	SL
12	B10	9806-120	1	12.92	6.87	SL
14	A34	9806-140N	1	26.00	19.00	FAB
16	A34	9806-160N	1	29.00	21.00	FAB
18	A34	9806-180N	1	33.50	24.50	FAB
20	A34	9806-200N	1	35.75	25.75	FAB
24	A34	9806-240N	1	43.00	31.00	FAB

90° ELL (S x FPT) Schedule 80 CORZAN® CPVC



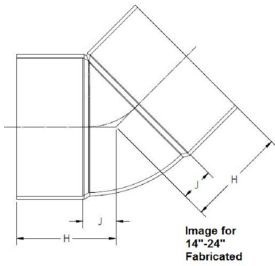
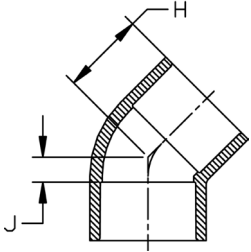
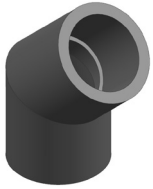
Size (inch)	P/L	Part No.	Pack Qty	HJ (inch)	HN (inch)	G (inch)	T (inch)	Design
½	625	9807-005	25	1.40	1.31	0.50	0.81	HS
¾	625	9807-007	25	1.59	1.36	0.58	0.72	HS
1	625	9807-010	10	1.81	1.70	0.67	1.00	HS
1 ¼	625	9807-012	10	2.15	1.92	0.89	1.03	HS
1 ½	625	9807-015	10	2.39	2.05	1.01	1.05	HS
2	625	9807-020	5	2.77	2.36	1.24	1.09	HS
3	625	9807-030	5	3.73	3.47	1.83	1.66	HS

90° ELL (FPT x FPT) Schedule 80 CORZAN® CPVC



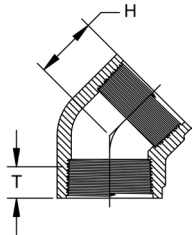
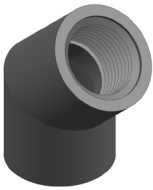
Size (inch)	P/L	Part No.	Pack Qty	H (inch)	T (inch)	Design
¼	625	9808-002	50	0.94	0.61	HS
¾	625	9808-003	50	1.00	0.63	HS
½	625	9808-005	25	1.27	0.78	HS
¾	625	9808-007	20	1.36	0.72	HS
1	625	9808-010	10	1.71	1.00	HS
1 ¼	625	9808-012	10	1.92	1.01	HS
1 ½	625	9808-015	10	2.08	1.06	HS
2	625	9808-020	5	2.36	1.08	HS
2 ½	625	9808-025	5	3.36	1.51	HS
3	625	9808-030	5	3.53	1.63	HS
4	625	9808-040	5	4.17	1.75	HS

45° Ell (S x S) Schedule 80 CORZAN® CPVC



Size (inch)	P/L	Part No.	Pack Qty	H (inch)	J (inch)	Design
½	625	9817-005	25	1.22	0.30	SL
¾	625	9817-007	20	1.29	0.28	SL
1	625	9817-010	25	1.48	0.32	SL
1 ¼	625	9817-012	15	1.78	0.47	SL
1 ½	625	9817-015	10	1.88	0.45	SL
2	625	9817-020	5	2.16	0.60	SL
2 ½	625	9817-025	5	2.56	0.79	SL
3	625	9817-030	5	2.67	0.77	SL
4	625	9817-040	5	3.31	1.04	SL
6	625	9817-060	2	4.86	1.77	SL
8	625	9817-080	2	6.15	2.07	SL
10	B10	9817-100	1	7.51	2.46	SL
12	B10	9817-120	1	9.00	2.96	SL
14	A34	9817-140N	1	10.25	3.50	FAB
16	A34	9817-160N	1	11.75	3.75	FAB
18	A34	9817-180N	1	13.25	4.25	FAB
20	A34	9817-200N	1	14.75	4.75	FAB
24	A34	9817-240N	1	17.75	5.75	FAB

45° Ell (FPT x FPT) Schedule 80 CORZAN® CPVC



Size (inch)	P/L	Part No.	Pack Qty	H (inch)	T (inch)	Design
¼	625	9819-002	50	0.69	0.59	HS
½	625	9819-005	25	1.02	0.76	SL
¾	625	9819-007	20	1.14	0.81	SL
1	625	9819-010	25	1.33	0.97	SL
1 ¼	625	9819-012	15	1.42	1.01	SL
1 ½	625	9819-015	10	1.47	1.07	SL
2	625	9819-020	5	1.74	2.37	SL
3	625	9819-030	5	2.43	1.66	SL
4	625	9819-040	5	2.78	1.76	SL

Coupling (S x S) Schedule 80 CORZAN® CPVC

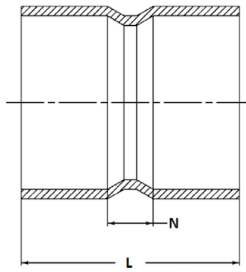
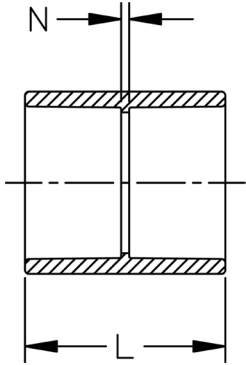
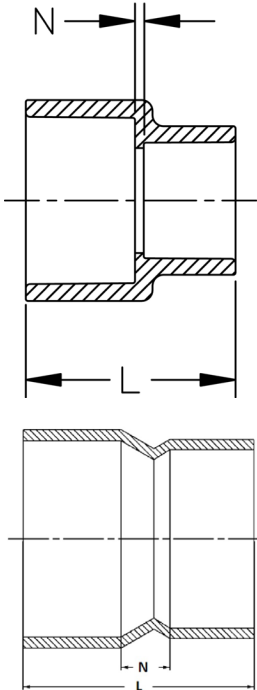


Image for 14"-24"
Fabricated

Size (inch)	P/L	Part No.	Pack Qty	L (inch)	N (inch)	Design
½	625	9829-005	25	1.93	0.12	SL
¾	625	9829-007	20	2.18	0.12	SL
1	625	9829-010	25	2.41	0.12	SL
1 ¼	625	9829-012	25	2.67	0.13	SL
1 ½	625	9829-015	10	2.94	0.15	SL
2	625	9829-020	5	3.18	0.13	SL
2 ½	625	9829-025	5	3.77	0.19	SL
3	625	9829-030	5	4.04	0.26	SL
4	625	9829-040	5	4.80	0.26	SL
6	625	9829-060	2	6.40	0.36	SL
8	625	9829-080	2	8.40	0.35	SL
10	B10	9829-100	1	10.77	0.75	SL
12	B10	9829-120	1	12.82	0.75	SL
14	A34	9829-140N	1	17.75	3.75	FAB
16	A34	9829-160N	1	20.25	4.25	FAB
18	A34	9829-180N	1	22.75	4.75	FAB
20	A34	9829-200N	1	25.25	5.25	FAB
24	A34	9829-240N	1	30.25	6.25	FAB

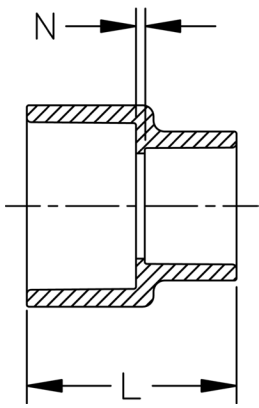
Reducing Coupling (S x S) Schedule 80 CORZAN® CPVC



Images for 14"-24"
Fabricated

Size (inch)	P/L	Part No.	Pack Qty	L (inch)	N (inch)	Design
¾ x ½	625	9829-101	25	2.13	0.13	HS
1 x ½	625	9829-130	25	2.17	0.12	HS
1 x ¾	625	9829-131	25	2.26	0.11	HS
1 ¼ x ¾	625	9829-167FB	15	2.94	0.66	BUSH
1 ¼ x 1	625	9829-168FB	15	2.52	0.10	BUSH
1 ½ x ½	625	9829-209FB	15	2.94	0.64	BUSH
1 ½ x ¾	625	9829-210FB	15	2.50	0.54	BUSH
1 ½ x 1	625	9829-211	15	2.65	0.11	HS
1 ½ x 1 ¼	625	9829-212	20	2.82	0.09	HS
2 x ½	625	9829-247FB	5	3.44	0.87	BUSH
2 x ¾	625	9829-248FB	5	3.39	0.77	BUSH
2 x 1	625	9829-249	5	3.15	0.32	HS
2 x 1 ¼	625	9829-250	5	3.05	0.14	HS
2 x 1 ½	625	9829-251	5	3.06	0.07	HS
2 ½ x 1 ½	625	9829-291	5	3.36	0.14	HS
2 ½ x 2	625	9829-292FB	5	4.08	0.66	BUSH
3 x 1	625	9829-335FB	5	4.56	1.53	BUSH
3 x 1 ½	625	9829-337FB	5	4.58	1.15	BUSH
3 x 2	625	9829-338	5	3.61	0.17	HS
3 x 2 ½	625	9829-339FB	5	4.42	0.63	BUSH
4 x 2	625	9829-420FB	5	4.94	1.08	BUSH
4 x 2 ½	625	9829-421FB	5	4.92	0.65	BUSH
4 x 3	625	9829-422	5	4.38	0.22	HS
6 x 4	625	9829-532	2	10.17	3.46	HS
8 x 4	625	9829-582FB	2	9.81	3.53	BUSH
8 x 6	625	9829-585	2	9.18	2.11	HS
10 x 4	A34	9829-623N	1	17.00	10.00	FAB
10 x 6	B10	9829-626FB	1	11.42	3.29	BUSH
10 x 6	A34	9829-626N	1	13.00	5.00	FAB
10 x 8	B10	9829-628FB	1	11.45	2.32	BUSH
10 x 8	A34	9829-628N	1	12.75	3.75	FAB
12 x 4	A34	9829-663N	1	26.25	18.25	FAB
12 x 6	A34	9829-666N	1	20.50	11.50	FAB
12 x 8	B10	9829-668FB	1	13.54	3.41	BUSH
12 x 8	A34	9829-668N	1	15.50	5.50	FAB
12 x 10	B10	9829-670FB	1	13.24	2.13	BUSH
12 x 10	A34	9829-670N	1	15.00	4.00	FAB
14 x 4	A34	9829-696N	1	13.00	3.00	FAB
14 x 6	A34	9829-698N	1	31.00	21.00	FAB
14 x 8	A34	9829-700N	1	21.00	10.00	FAB
14 x 10	A34	9829-702N	1	17.00	5.00	FAB
14 x 12	A34	9829-704N	1	16.50	3.50	FAB
16 x 4	A34	9829-730N	1	16.50	3.50	FAB
16 x 6	A34	9829-732N	1	16.50	4.50	FAB
16 x 8	A34	9829-734N	1	18.05	5.00	FAB
16 x 10	A34	9829-736N	1	19.00	5.10	FAB
16 x 12	A34	9829-738N	1	19.25	5.25	FAB
16 x 14	A34	9829-740N	1	19.50	4.50	FAB
18 x 4	A34	9829-784N	1	48.50	37.50	FAB
18 x 6	A34	9829-786N	1	36.00	24.00	FAB
18 x 8	A34	9829-788N	1	42.50	29.50	FAB
18 x 10	A34	9829-790N	1	33.50	19.50	FAB
18 x 12	A34	9829-792N	1	22.00	7.00	FAB
18 x 14	A34	9829-794N	1	22.25	6.25	FAB
18 x 16	A34	9829-796N	1	21.75	4.75	FAB
20 x 4	A34	9829-814N	1	60.50	48.50	FAB
20 x 6	A34	9829-816N	1	55.50	42.50	FAB
20 x 8	A34	9829-818N	1	56.25	42.25	FAB
20 x 10	A34	9829-820N	1	47.25	32.25	FAB
20 x 12	A34	9829-822N	1	37.00	21.00	FAB
20 x 14	A34	9829-824N	1	37.25	20.25	FAB

table continued on the next page



Size (inch)	P/L	Part No.	Pack Qty	L (inch)	N (inch)	Design
20 x 16	A34	9829-826N	1	24.50	6.50	FAB
20 x 18	A34	9829-828N	1	24.00	5.00	FAB
24 x 4	A34	9829-904N	1	66.00	52.00	FAB
24 x 6	A34	9829-906N	1	61.00	46.00	FAB
24 x 8	A34	9829-908N	1	52.00	36.00	FAB
24 x 10	A34	9829-910N	1	52.75	35.75	FAB
24 x 12	A34	9829-912N	1	42.50	24.50	FAB
24 x 14	A34	9829-914N	1	42.75	23.75	FAB
24 x 16	A34	9829-916N	1	42.25	22.25	FAB
24 x 18	A34	9829-918N	1	29.50	8.50	FAB
24 x 20	A34	9829-920N	1	29.25	7.25	FAB

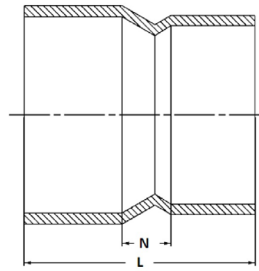
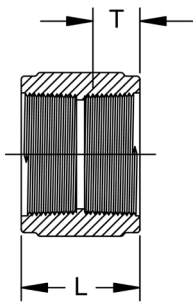
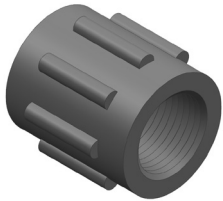


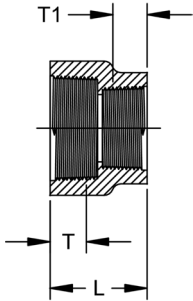
Image for 14"-24"
Fabricated

Coupling (FPT x FPT) Schedule 80 CORZAN® CPVC



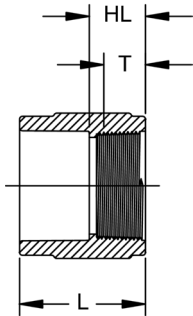
Size (inch)	P/L	Part No.	Pack Qty	L (inch)	T (inch)	Design
¼	625	9830-002	50	1.29	0.61	HS
¾	625	9830-003	50	1.35	0.62	HS
½	625	9830-005	25	1.68	0.77	SL
¾	625	9830-007	25	1.75	0.80	SL
1	625	9830-010	25	2.13	0.99	SL
1 ¼	625	9830-012	25	2.19	1.03	SL
1 ½	625	9830-015	10	2.22	1.03	SL
2	625	9830-020	5	2.29	1.08	SL
2 ½	625	9830-025	5	3.33	1.51	SL
3	625	9830-030	5	3.53	1.65	SL
4	625	9830-040	5	3.76	1.75	SL

Reducing Coupling (FPT x FPT) Schedule 80 CORZAN® CPVC



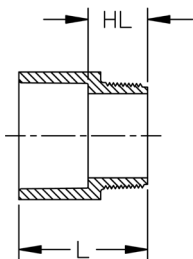
Size (inch)	P/L	Part No.	Pack Qty	L (inch)	T (inch)	T1 (inch)	Design
3/8 x 1/4	625	9830-052	50	1.29	0.60	0.59	HS
1/2 x 1/4	625	9830-072	50	1.45	0.75	0.59	HS
1/2 x 3/8	625	9830-073	50	1.46	0.74	0.60	HS
3/4 x 1/2	625	9830-101	25	1.69	0.78	0.78	HS
1 x 1/2	625	9830-130	25	1.84	0.98	0.77	HS
1 x 3/4	625	9830-131	25	1.88	0.98	0.80	HS
1 1/4 x 3/4	625	9830-167	25	1.90	1.00	0.79	HS
1 1/2 x 1	625	9830-211	20	2.06	1.02	0.95	HS
2 x 1 1/2	625	9830-251	20	2.18	1.05	1.02	HS

Female Adapter (S x FPT) Schedule 80 CORZAN® CPVC



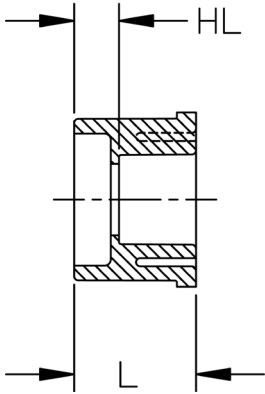
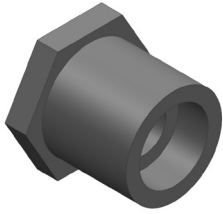
Size (inch)	P/L	Part No.	Pack Qty	HL (inch)	L (inch)	T (inch)	Design
1/4	625	9835-002	50	0.75	1.43	0.58	HS
1/2	625	9835-005	25	0.91	1.80	0.75	HS
3/4	625	9835-007	20	0.95	1.96	0.79	HS
1	625	9835-010	25	1.11	2.27	0.98	HS
1 1/4	625	9835-012	10	1.18	2.44	1.02	HS
1 1/2	625	9835-015	10	1.19	2.59	1.03	HS
2	625	9835-020	5	1.25	2.76	1.06	HS
3	625	9835-030	5	1.91	3.80	1.65	HS
4	625	9835-040	5	2.02	4.29	1.74	HS
6	A34	9835-060N	1	4.50	7.50	1.51	FAB
8	A34	9835-080N	1	4.25	8.50	1.71	FAB
10	A34	9835-100N	1	5.00	10.00	2.00	FAB
12	A34	9835-120N	1	6.00	11.13	2.13	FAB

Male Adapter (S x MPT) Schedule 80 CORZAN® CPVC



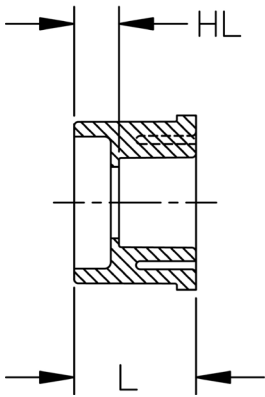
Size (inch)	P/L	Part No.	Pack Qty	HL (inch)	L (inch)	Design
1/2	625	9836-005	50	0.94	1.85	SL
3/4	625	9836-007	25	1.05	2.03	HS
1	625	9836-010	25	1.22	2.38	HS
1 1/4	625	9836-012	15	1.28	2.56	HS
1 1/2	625	9836-015	15	1.30	2.69	HS
2	625	9836-020	5	1.32	2.83	HS
3	625	9836-030	5	1.99	3.90	HS
4	625	9836-040	5	2.15	4.40	HS
6	A34	9836-060N	1	3.25	6.25	FAB
8	A34	9836-080N	1	3.50	7.50	FAB
10	A34	9836-100N	1	4.18	9.18	FAB
12	A34	9836-120N	1	4.63	10.63	FAB

Flush Style Reducer Bushing (SPG x S) Schedule 80 CORZAN® CPVC



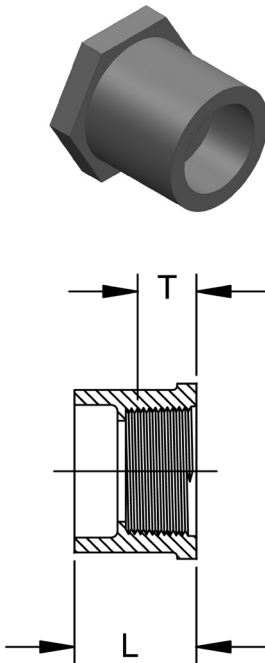
Size (inch)	P/L	Part No.	Pack Qty	HL (inch)	L (inch)	Design
½ x ¼	625	9837-072	50	0.47	1.15	FLUSH
½ x ⅜	625	9837-073	50	0.33	1.09	FLUSH
¾ x ½	625	9837-101	50	0.42	1.30	FLUSH
1 x ½	625	9837-130	50	0.55	1.44	FLUSH
1 x ¾	625	9837-131	50	0.41	1.43	FLUSH
1 ¼ x ½	625	9837-166	25	0.66	1.55	FLUSH
1 ¼ x ¾	625	9837-167	25	0.56	1.57	FLUSH
1 ¼ x 1	625	9837-168	25	0.44	1.59	FLUSH
1 ½ x ½	625	9837-209	25	0.78	1.69	FLUSH
1 ½ x ¾	625	9837-210	25	0.67	1.68	FLUSH
1 ½ x 1	625	9837-211	25	0.55	1.69	FLUSH
1 ½ x 1 ¼	625	9837-212	25	0.44	1.72	FLUSH
2 x ½	625	9837-247	10	0.91	1.81	FLUSH
2 x ¾	625	9837-248	10	0.79	1.82	FLUSH
2 x 1	625	9837-249	10	0.68	1.83	FLUSH
2 x 1 ¼	625	9837-250	10	0.54	1.81	FLUSH
2 x 1 ½	625	9837-251	10	0.40	1.81	FLUSH
2 ½ x 1 ½	625	9837-291	5	0.79	2.31	FLUSH
2 ½ x 2	625	9837-292	5	0.47	2.10	FLUSH
3 x 1	625	9837-335	5	1.27	2.42	FLUSH
3 x 1 ¼	A34	9837-336FB	5	1.43	2.71	FAB
3 x 1 ½	625	9837-337	5	0.89	2.43	FLUSH
3 x 2	625	9837-338	5	0.86	2.42	FLUSH
3 x 2 ½	625	9837-339	5	0.38	2.27	FLUSH
4 x 2	625	9837-420	5	1.14	2.70	FLUSH
4 x 2 ½	625	9837-421FB	5	1.40	2.96	BUSH
4 x 3	625	9837-422	5	0.77	2.74	FLUSH
6 x ¾	625	9837-524FB	2	1.79	4.38	BUSH
6 x 1	625	9837-525FB	2	1.79	4.10	BUSH
6 x 1 ½	625	9837-527FB	2	1.79	4.10	BUSH
6 x 2	625	9837-528FB	2	1.13	4.03	BUSH
6 x 2 ½	625	9837-529FB	2	1.79	3.95	BUSH
6 x 3	625	9837-530	2	1.74	3.65	FLUSH
6 x 4	625	9837-532	2	1.42	3.67	FLUSH
8 x 1 ½	625	9837-577FB	1	1.56	5.66	BUSH
8 x 2	625	9837-578FB	1	1.56	5.59	BUSH
8 x 3	625	9837-580FB	1	1.56	5.15	BUSH
8 x 4	625	9837-582FB	1	1.56	5.15	BUSH
8 x 5	625	9837-583FB	1	2.44	5.09	FAB
8 x 6	625	9837-585	1	1.69	4.66	FLUSH
10 x 2	B10	9837-619FB	1	2.57	6.66	BUSH
10 x 3	B10	9837-621FB	1	2.57	6.15	BUSH
10 x 4	B10	9837-623FB	1	4.01	6.26	BUSH
10 x 6	B10	9837-626	1	2.59	5.69	FLUSH
10 x 8	B10	9837-628	1	1.62	5.72	FLUSH
12 x 3	B10	9837-662FB	1	1.63	7.78	BUSH
12 x 4	B10	9837-663FB	1	1.63	7.78	BUSH
12 x 6	B10	9837-666FB	1	4.26	7.35	BUSH
12 x 8	02	9837-668	1	2.66	6.76	FLUSH
12 x 10	B10	9837-670	1	1.66	6.77	FLUSH
14 x 4	A34	9837-696N	1	5.50	7.50	FAB
14 x 6	A34	9837-698N	1	4.50	7.50	FAB
14 x 8	A34	9837-700N	1	3.50	7.50	FAB
14 x 10	A34	9837-702N	1	2.50	7.50	FAB
14 x 12	A34	9837-704N	1	1.50	7.50	FAB
16 x 4	A34	9837-730N	1	6.50	8.50	FAB
16 x 6	A34	9837-732N	1	5.50	8.50	FAB
16 x 8	A34	9837-734N	1	4.50	8.50	FAB
16 x 10	A34	9837-736N	1	3.50	8.50	FAB
16 x 12	A34	9837-738N	1	2.50	8.50	FAB
16 x 14	A34	9837-740N	1	1.50	8.50	FAB

table continued on the next page



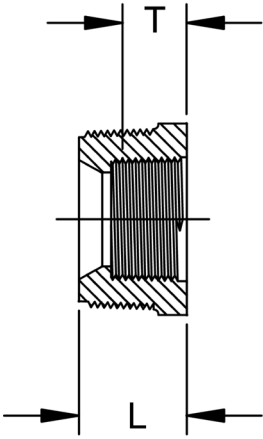
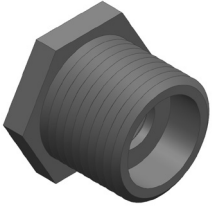
Size (inch)	P/L	Part No.	Pack Qty	HL (inch)	L (inch)	Design
18 x 4	A34	9837-784N	1	7.50	9.50	FAB
18 x 6	A34	9837-786N	1	6.50	9.50	FAB
18 x 8	A34	9837-788N	1	5.50	9.50	FAB
18 x 10	A34	9837-790N	1	4.50	9.50	FAB
18 x 12	A34	9837-792N	1	3.50	9.50	FAB
18 x 14	A34	9837-794N	1	2.50	9.50	FAB
18 x 16	A34	9837-796N	1	1.50	9.50	FAB
20 x 4	A34	9837-814N	1	8.50	10.50	FAB
20 x 6	A34	9837-816N	1	7.50	10.50	FAB
20 x 8	A34	9837-818N	1	6.50	10.50	FAB
20 x 10	A34	9837-820N	1	5.50	10.50	FAB
20 x 12	A34	9837-822N	1	4.50	10.50	FAB
20 x 14	A34	9837-824N	1	3.50	10.50	FAB
20 x 16	A34	9837-826N	1	2.50	10.50	FAB
20 x 18	A34	9837-828N	1	1.50	10.50	FAB
24 x 4	A34	9837-904N	1	10.50	12.50	FAB
24 x 6	A34	9837-906N	1	9.50	12.50	FAB
24 x 8	A34	9837-908N	1	8.50	12.50	FAB
24 x 10	A34	9837-910N	1	7.50	12.50	FAB
24 x 12	A34	9837-912N	1	6.50	12.50	FAB
24 x 14	A34	9837-914N	1	5.50	12.50	FAB
24 x 16	A34	9837-916N	1	4.50	12.50	FAB
24 x 18	A34	9837-918N	1	3.50	12.50	FAB
24 x 20	A34	9837-920N	1	2.50	12.50	FAB

Flush Style Reducer Bushing (SPG x FPT) Schedule 80 CORZAN® CPVC



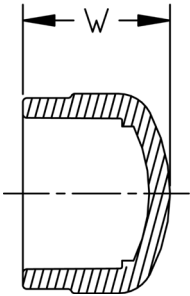
Size (inch)	P/L	Part No.	Pack Qty	L (inch)	T (inch)	Design
½ x ¼	625	9838-072	50	1.14	0.61	FLUSH
½ x ⅜	625	9838-073	50	1.13	0.61	FLUSH
¾ x ¼	625	9838-098	50	1.21	0.60	FLUSH
¾ x ½	625	9838-101	50	1.28	0.77	FLUSH
1 x ½	625	9838-130	50	1.42	0.76	FLUSH
1 x ¾	625	9838-131	50	1.41	0.81	FLUSH
1 ¼ x ½	625	9838-166	15	1.56	0.75	FLUSH
1 ¼ x ¾	625	9838-167	15	1.56	0.79	FLUSH
1 ¼ x 1	625	9838-168	15	1.56	0.99	FLUSH
1 ½ x ½	625	9838-209	15	1.68	0.76	FLUSH
1 ½ x ¾	625	9838-210	15	1.69	0.79	FLUSH
1 ½ x 1	625	9838-211	15	1.68	0.99	FLUSH
1 ½ x 1 ¼	625	9838-212	15	1.69	1.02	FLUSH
2 x ½	625	9838-247	10	1.80	0.77	FLUSH
2 x ¾	625	9838-248	10	1.80	0.80	FLUSH
2 x 1	625	9838-249	10	1.80	0.99	FLUSH
2 x 1 ¼	625	9838-250	10	1.81	1.02	FLUSH
2 x 1 ½	625	9838-251	10	1.88	1.04	FLUSH
2 ½ x 1 ½	625	9838-291	5	2.24	1.07	FLUSH
2 ½ x 2	625	9838-292	5	2.12	1.10	FLUSH
3 x 2	625	9838-338	5	2.42	1.07	FLUSH
4 x 2	625	9838-420	5	2.71	1.10	FLUSH
4 x 3	625	9838-422	5	2.75	1.62	FLUSH

Flush Style Reducer Bushing (MPT x FPT) Schedule 80 CORZAN® CPVC



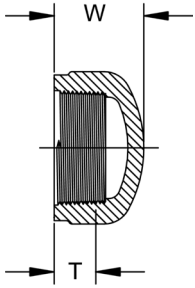
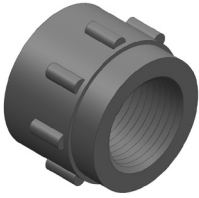
Size (inch)	P/L	Part No.	Pack Qty	L (inch)	T (inch)	Style
3/8 x 1/4	625	9839-052	50	0.80	0.60	FLUSH
1/2 x 1/4	625	9839-072	50	0.95	0.60	FLUSH
1/2 x 3/8	625	9839-073	50	0.96	0.61	FLUSH
3/4 x 3/8	625	9839-099	50	1.02	0.61	FLUSH
3/4 x 1/2	625	9839-101	50	1.08	0.75	FLUSH
1 x 1/2	625	9839-130	25	1.24	0.76	FLUSH
1 x 3/4	625	9839-131	25	1.28	0.80	FLUSH
1 1/4 x 1	625	9839-168	25	1.30	1.00	FLUSH
1 1/2 x 3/4	625	9839-210	25	1.33	0.78	FLUSH
1 1/2 x 1	625	9839-211	25	1.34	0.98	FLUSH
1 1/2 x 1 1/4	625	9839-212	25	1.33	1.02	FLUSH
2 x 1	625	9839-249	10	1.42	0.97	FLUSH
2 x 1 1/4	625	9839-250	10	1.43	1.01	FLUSH
2 x 1 1/2	625	9839-251	10	1.35	1.02	FLUSH

Cap (S) Schedule 80 CORZAN® CPVC



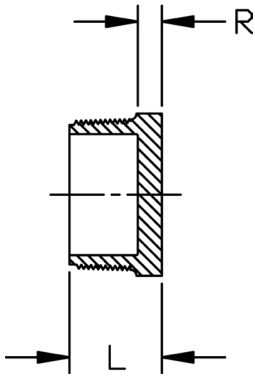
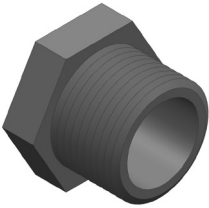
Size (inch)	P/L	Part No.	Pack Qty	W (inch)	Design
1/2	625	9847-005	50	1.30	HS
3/4	625	9847-007	25	1.46	HS
1	625	9847-010	25	1.66	HS
1 1/4	625	9847-012	15	1.89	HS
1 1/2	625	9847-015	10	2.08	HS
2	625	9847-020	5	2.32	HS
2 1/2	625	9847-025	5	2.61	HS
3	625	9847-030	5	3.06	HS
4	625	9847-040	5	3.69	HS
6	625	9847-060	2	4.86	HS
8	625	9847-080	2	6.25	SL
10	B10	9847-100	1	7.92	SL
12	B10	9847-120	1	9.37	SL
14	A34	9847-140N	1	5.75	FAB
16	A34	9847-160N	1	7.00	FAB
18	A34	9847-180N	1	8.25	FAB
20	A34	9847-200N	1	8.75	FAB
24	A34	9847-240N	1	10.25	FAB

Cap (FPT) Schedule 80 CORZAN® CPVC



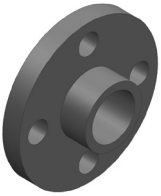
Size (inch)	P/L	Part No.	Pack Qty	W (inch)	T (inch)	Design
¼	625	9848-002	50	0.93	0.54	HS
⅜	625	9848-003	50	0.94	0.62	HS
½	625	9848-005	50	1.14	0.74	HS
¾	625	9848-007	25	1.25	0.80	HS
1	625	9848-010	25	1.51	0.97	HS
1 ¼	625	9848-012	15	1.59	1.00	HS
1 ½	625	9848-015	10	1.70	1.01	HS
2	625	9848-020	5	1.82	1.06	HS
2 ½	625	9848-025	5	2.61	1.45	HS

Plug (MPT) Schedule 80 CORZAN® CPVC



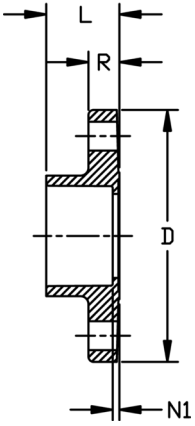
Size (inch)	P/L	Part No.	Pack Qty	L (inch)	R (inch)	Design
¼	625	9850-002	50	0.81	0.22	HS
⅜	625	9850-003	50	0.83	0.22	HS
½	625	9850-005	50	0.98	0.22	HS
¾	625	9850-007	50	1.06	0.25	HS
1	625	9850-010	25	1.24	0.27	HS
1 ¼	625	9850-012	25	1.33	0.31	HS
1 ½	625	9850-015	20	1.38	0.34	HS
2	625	9850-020	10	1.47	0.39	HS
3	625	9850-030	5	1.98	0.38	HS
4	625	9850-040	5	2.16	0.39	HS
6	A34	9850-060N	1	2.00	0.75	FAB
8	A34	9850-080N	1	2.00	0.75	FAB
10	A34	9850-100N	1	2.00	0.75	FAB
12	A34	9850-120N	1	2.00	0.75	FAB

Flange - One Piece (S) Schedule 80 CORZAN® CPVC

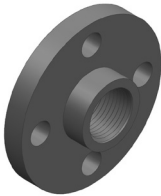


- ANSI 150 Class according to ANSI B16.5
- 150 psi @ 73°F (10.3 bar @ 22.7°C)
- HC = Honeycomb (Face)

Size (inch)	P/L	Part No.	Pack Qty	# holes	Bolt Dia. (inch)	bolt cir. dia. (inch)	D (inch)	L (inch)	N1 (inch)	R (inch)	Design
½	625	9851-005	5	4	½	2.38	3.50	1.03	0.13	0.39	HC
¾	625	9851-007	5	4	½	2.75	3.89	1.14	0.13	0.45	HC
1	625	9851-010	5	4	½	3.13	4.28	1.29	0.16	0.52	HC
1 ¼	625	9851-012	5	4	½	3.50	4.64	1.45	0.14	0.59	HC
1 ½	625	9851-015	5	4	½	3.88	5.01	1.54	0.16	0.68	HC
2	625	9851-020	5	4	¾	4.75	6.01	1.73	0.16	0.69	HC
2 ½	625	9851-025	5	4	¾	5.50	7.00	1.99	0.17	0.75	HC
3	625	9851-030	5	4	¾	6.00	7.51	2.46	0.57	1.10	HC
4	625	9851-040	5	8	¾	7.50	9.04	2.79	0.52	1.19	HC
6	625	9851-060	2	8	¾	9.50	11.13	3.86	0.36	1.38	HC

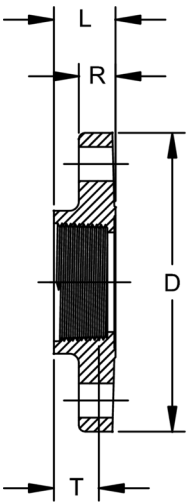


Flange - One Piece (FPT) Schedule 80 CORZAN® CPVC

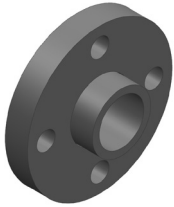


- ANSI 150 Class according to ANSI B16.5
- 150 psi @ 73°F (10.3 bar @ 22.7°C)
- HC = Honeycomb (Face)

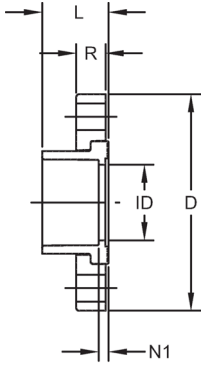
Size (inch)	P/L	Part No.	Pack Qty	# holes	Bolt Dia. (inch)	bolt cir. dia. (inch)	D (inch)	L (inch)	T (inch)	R (inch)	Design
½	625	9852-005	5	4	½	2.38	3.51	0.89	0.77	0.39	HC
¾	625	9852-007	5	4	½	2.75	3.89	0.91	0.79	0.45	HC
1	625	9852-010	5	4	½	3.13	4.28	1.13	1.00	0.53	HC
1 ¼	625	9852-012	5	4	½	3.50	4.62	1.20	1.06	0.58	HC
1 ½	625	9852-015	5	4	½	3.88	4.99	1.19	1.03	0.68	HC
2	625	9852-020	5	4	¾	4.75	6.02	1.22	1.06	0.70	HC
2 ½	625	9852-025	5	4	¾	5.50	7.00	1.72	1.53	0.75	HC
3	625	9852-030	5	4	¾	6.00	7.50	2.15	1.63	1.15	HC
4	625	9852-040	5	8	¾	7.50	9.00	2.30	1.77	1.23	HC



Flange - Van Stone (S) Schedule 80 CORZAN® CPVC

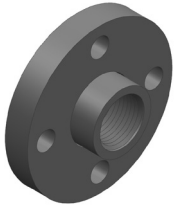


- ANSI 150 Class according to ANSI B16.5
- 1/2" - 12" pressure rating is 150 psi @ 73°F (10.3 bar @ 22.7°C)
- 14" - 24" pressure rating is 100 psi @ 73°F (6.9 bar @ 22.7°C) - Steel Ring
- HC = Honeycomb (Face)

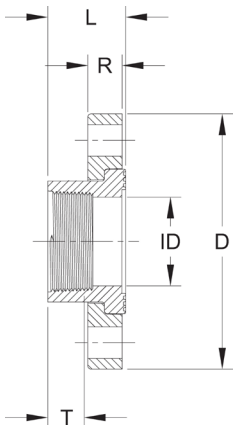


Size (inch)	P/L	Part No.	Pack Qty	# holes	Bolt Dia. (inch)	bolt cir. dia. (inch)	D (inch)	L (inch)	N1 (inch)	R (inch)	ID (inch)	Design
1/2	625	9854-005	5	4	1/2	2.38	3.53	1.10	0.18	0.57	0.60	HC
3/4	625	9854-007	5	4	1/2	2.75	3.87	1.23	0.18	0.59	0.82	HC
1	625	9854-010	5	4	1/2	3.13	4.25	1.38	0.20	0.66	1.03	HC
1 1/4	625	9854-012	5	4	1/2	3.50	4.62	1.52	0.21	0.69	1.36	HC
1 1/2	625	9854-015	5	4	1/2	3.88	5.01	1.68	0.25	0.75	1.60	HC
2	625	9854-020	5	4	5/8	4.75	6.02	1.84	0.29	0.82	2.06	HC
2 1/2	625	9854-025	5	4	5/8	5.50	7.01	2.15	0.33	0.98	2.49	HC
3	625	9854-030	5	4	5/8	6.00	7.50	2.33	0.39	1.02	3.09	HC
4	625	9854-040	5	8	5/8	7.50	8.99	2.75	0.24	1.10	4.06	HC
6	625	9854-060	2	8	3/4	9.50	10.98	3.55	0.48	1.25	6.11	HC
8	625	9854-080	2	8	3/4	11.75	13.51	4.60	0.51	1.71	8.00	HC
10	B10	9854-100	2	12	7/8	14.25	15.97	5.66	0.53	1.73	10.10	HC
12	B10	9854-120	2	12	7/8	17.00	18.95	6.71	0.57	1.72	11.96	HC
14	A34	9854-140N	1	12	7/8	18.75	21.00	11.75	4.75	0.50	12.50	FAB
16	A34	9854-160N	1	16	1	21.25	23.50	13.50	5.50	0.50	14.31	FAB
18	A34	9854-180N	1	16	1 1/8	22.75	25.00	14.50	5.50	0.50	16.13	FAB
20	A34	9854-200N	1	20	1 1/8	25.00	27.50	17.25	7.25	0.50	18.00	FAB
24	A34	9854-240N	1	20	1 1/4	29.50	32.00	19.50	7.50	0.50	21.56	FAB

Flange - Van Stone (FPT) Schedule 80 CORZAN® CPVC

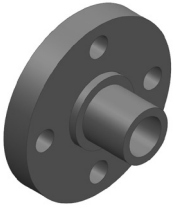


- ANSI 150 Class according to ANSI B16.5
- 150 psi @ 73°F (10.3 bar @ 22.7°C)
- HC = Honeycomb (Face)

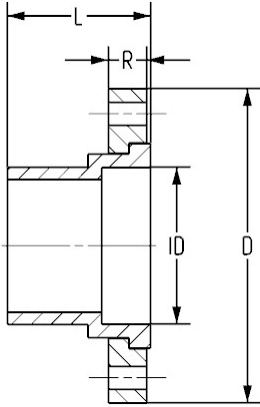


Size (inch)	P/L	Part No.	Pack Qty	# holes	Bolt Dia. (inch)	bolt cir. dia. (inch)	D (inch)	L (inch)	T (inch)	R (inch)	ID (inch)	Design
1	625	9855-010	5	4	1/2	3.13	4.25	1.39	1.01	0.66	1.06	HC
1 1/4	625	9855-012	5	4	1/2	3.50	4.62	1.50	1.02	0.69	1.38	HC
1 1/2	625	9855-015	5	4	1/2	3.88	5.01	1.67	1.06	0.75	1.61	HC
2	625	9855-020	5	4	5/8	4.75	6.02	1.82	1.09	0.82	2.08	HC

Flange - Van Stone (SPG) Schedule 80 CORZAN® CPVC

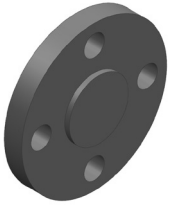


- ANSI 150 Class according to ANSI B16.5
- 1/2" - 12" pressure rating is 150 psi @ 73°F (10.3 bar @ 22.7°C)
- 14" - 24" pressure rating is 100 psi @ 73°F (6.9 bar @ 22.7°C) - Steel Ring
- HC = Honeycomb (Face)

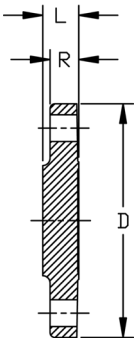


Size (inch)	P/L	Part No.	Pack Qty	# holes	Bolt Dia. (inch)	bolt cir. dia. (inch)	D (inch)	L (inch)	R (inch)	ID (inch)	Design
1/2	625	9856-005	5	4	1/2	2.38	3.53	1.72	0.57	0.84	HC
3/4	625	9856-007	5	4	1/2	2.75	3.87	1.85	0.59	1.05	HC
1	625	9856-010	5	4	1/2	3.13	4.25	2.10	0.66	1.32	HC
1 1/4	625	9856-012	5	4	1/2	3.50	4.62	2.28	0.69	1.66	HC
1 1/2	625	9856-015	5	4	1/2	3.88	5.01	2.48	0.75	1.90	HC
2	625	9856-020	5	4	5/8	4.75	6.02	2.80	0.82	2.38	HC
2 1/2	625	9856-025	5	4	5/8	5.50	7.01	3.27	0.98	2.86	HC
3	625	9856-030	5	4	5/8	6.00	7.50	3.60	1.02	3.49	HC
4	625	9856-040	5	8	5/8	7.50	8.99	4.10	1.10	4.49	HC
6	625	9856-060	2	8	3/4	9.50	10.98	5.10	1.25	6.60	HC
8	625	9856-080	1	8	3/4	11.75	13.51	6.88	1.71	8.62	HC
10	B10	9856-100	1	12	7/8	14.25	15.97	8.30	1.73	10.70	HC
12	B10	9856-120	1	12	7/8	17.00	18.95	9.55	1.72	12.69	HC
14	A34	9856-140N	1	12	1	18.75	21.00	13.00	0.50	11.41	FAB
16	A34	9856-160N	1	16	1	21.25	23.50	14.00	0.50	13.08	FAB
18	A34	9856-180N	1	16	1 1/8	22.75	25.00	16.00	0.50	14.76	FAB
20	A34	9856-200N	1	20	1 1/8	25.00	27.50	18.00	0.50	16.43	FAB
24	A34	9856-240N	1	20	1 1/4	29.50	32.00	20.00	0.50	19.79	FAB

Flange (Blind) Schedule 80 CORZAN® CPVC

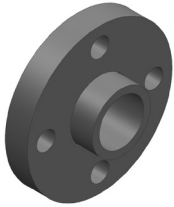


- ANSI 150 Class according to ANSI B16.5
- 1/2" - 8" 150 psi @ 73°F (10.3 bar @ 22.7°C)
- 10" - 24" 50 psi @ 73°F (3.5 bar @ 22.7°C)
- HC = Honeycomb (Face)

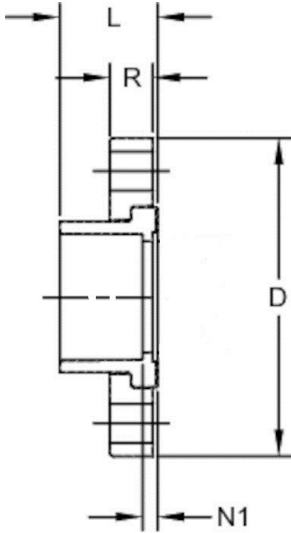


Size (inch)	P/L	Part No.	Pack Qty	# holes	Bolt Dia. (inch)	bolt cir. dia. (inch)	D (inch)	L (inch)	R (inch)	Design
1/2	625	9853-005	5	4	1/2	2.38	3.51	0.48	0.39	HC
3/4	625	9853-007	5	4	1/2	2.75	3.90	0.55	0.45	HC
1	625	9853-010	5	4	1/2	3.13	4.29	0.66	0.53	HC
1 1/4	625	9853-012	5	4	1/2	3.50	4.62	0.73	0.59	HC
1 1/2	625	9853-015	5	4	1/2	3.88	5.01	0.81	0.68	HC
2	625	9853-020	5	4	5/8	4.75	6.02	0.90	0.70	HC
2 1/2	625	9853-025	5	4	5/8	5.50	7.00	0.97	0.76	HC
3	625	9853-030	5	4	5/8	6.00	7.47	0.96	1.03	HC
4	625	9853-040	5	8	5/8	7.50	8.87	1.05	1.00	HC
6	625	9853-060	2	8	3/4	9.50	10.89	1.42	1.17	HC
8	625	9853-080	2	8	3/4	11.75	13.51	1.51	1.31	HC
10	A34	9853-100N	1	12	7/8	14.25	16.00	1.00	1.00	SOLID
12	A34	9853-120N	1	12	7/8	17.00	19.00	1.00	1.00	SOLID
14	A34	9853-140N	1	12	1	18.75	21.00	1.00	1.00	SOLID
16	A34	9853-160N	1	16	1	21.25	23.50	1.00	1.00	SOLID
18	A34	9853-180N	1	16	1 1/8	22.75	25.00	1.00	1.00	SOLID
20	A34	9853-200N	1	20	1 1/8	25.00	27.50	1.00	1.00	SOLID
24	A34	9853-240N	1	20	1 1/4	29.50	32.00	1.00	1.00	SOLID

Flange - Van Stone 300 (S) Schedule 80 CORZAN® CPVC



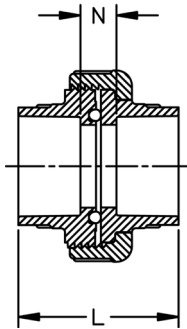
- ANSI 300 Class according to ANSI B16.5
- 150 psi @ 73°F (10.3 bar @ 22.7°C)
- HC = Honeycomb (Face)



Size (inch)	P/L	Part No.	Pack Qty	# holes	Bolt Dia. (inch)	bolt cir. dia. (inch)	D (inch)	L (inch)	N1 (inch)	R (inch)	Design
½	25	9854-005-300	1	4	½	2.63	3.75	1.03	0.11	0.57	FAB
¾	25	9854-007-300	1	4	⅝	3.25	4.63	1.15	0.13	0.59	FAB
1	25	9854-010-300	1	4	⅝	3.50	4.88	1.38	0.11	0.66	FAB
1 ¼	25	9854-012-300	1	4	⅝	3.88	5.25	1.45	0.14	0.69	FAB
1 ½	25	9854-015-300	1	4	¾	4.50	6.13	1.59	0.15	0.75	FAB
2	25	9854-020-300	1	8	⅝	5.00	6.50	1.76	0.20	0.82	FAB
2 ½	25	9854-025-300	1	8	¾	5.88	7.50	2.05	0.22	0.98	FAB
3	25	9854-030-300	1	8	¾	6.63	8.25	2.25	0.30	1.02	FAB
4	25	9854-040-300	1	8	¾	7.88	10.00	2.65	0.34	1.10	FAB
6	25	9854-060-300	1	12	¾	10.63	12.50	3.45	0.35	1.25	FAB
8	25	9854-080-300	1	12	⅞	13.00	15.00	4.50	0.40	1.71	FAB
10	02	9854-100-300	1	16	1	15.25	17.50	5.63	0.50	1.73	FAB
12	02	9854-120-300	1	16	1 ⅛	17.75	20.50	6.69	0.56	1.72	FAB

Union Type 375 (S x S) Schedule 80 CORZAN® CPVC

235 psi @ 73°F (16.2 bar @ 22.7°C)



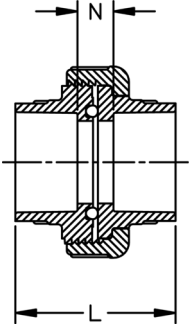
Size (inch)	P/L	EPDM Part No.	FKM Part No.	Pack Qty	L (inch)	N (inch)
½	625	9897-375-005	9857-375-005	5	2.56	0.78
¾	625	9897-375-007	9857-375-007	5	2.80	0.76
1	625	9897-375-010	9857-375-010	5	3.22	0.89
1 ¼	625	9897-375-012	9857-375-012	5	3.56	0.99
1 ½	625	9897-375-015	9857-375-015	5	3.76	0.92
2	625	9897-375-020	9857-375-020	2	4.18	1.11



Union (S x S) Schedule 80 CORZAN® CPVC

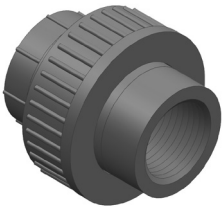
150 psi @ 73°F (10.3 bar @ 22.7°C)

Size (inch)	P/L	EPDM Part No.	FKM Part No.	Pack Qty	L (inch)	N (inch)
3	625	9897-030	9857-030	1	4.74	0.96
4	625	9897-040	9857-040	1	5.62	1.11

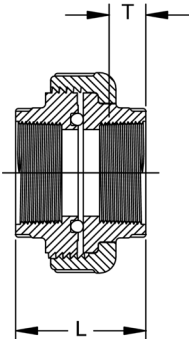


Union Type 375 (FPT X FPT) Schedule 80 CORZAN® CPVC

• 235 psi @ 73°F (16.2 bar @ 22.7°C)



Size (inch)	P/L	EPDM Part No.	FKM Part No.	Pack Qty	L (inch)	T (inch)
½	625	9898-375-005	9858-375-005	5	2.06	0.75
¾	625	9898-375-007	9858-375-007	5	2.11	0.79
1	625	9898-375-010	9858-375-010	5	2.60	1.01
1 ¼	625	9898-375-012	9858-375-012	5	2.80	1.06
1 ½	625	9898-375-015	9858-375-015	5	2.76	1.06
2	625	9898-375-020	9858-375-020	2	2.93	1.09

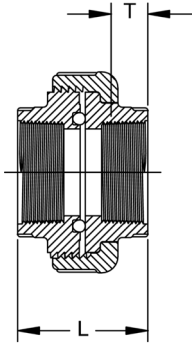




Union (FPT X FPT) Schedule 80 CORZAN® CPVC

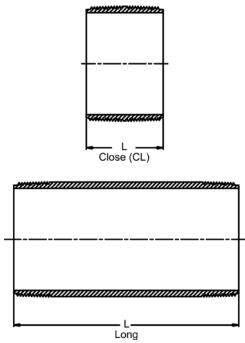
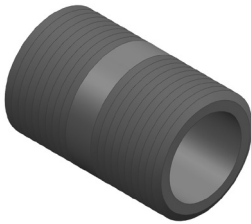
- 150 psi @ 73°F (10.3 bar @ 22.7°C)

Size (inch)	P/L	EPDM Part No.	FKM Part No.	Pack Qty	L (inch)	T (inch)
3	625	9898-030	9858-030	1	4.75	1.33
4	625	9898-040	9858-040	1	5.71	1.78



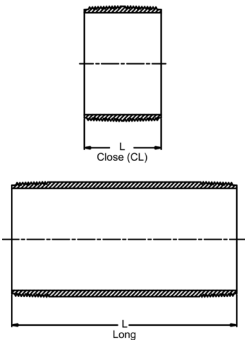
Nipple (MPT x MPT) Schedule 80 CORZAN® CPVC

- Nipples fabricated from pipe



Size (inch)	P/L	Part No.	Pack Qty	L (inch)
1/2 x CL	625	9861-077	25	1.13
1/2 x 2	625	9861-079	25	2.00
1/2 x 3	625	9861-081	25	3.00
1/2 x 4	625	9861-082	25	4.00
1/2 x 5	625	9861-083	25	5.00
1/2 x 6	625	9861-084	25	6.00
1/2 x 8	625	9861-086	25	8.00
3/4 x CL	625	9861-104	25	1.38
3/4 x 2	625	9861-020	25	2.00
3/4 x 3	625	9861-106	25	3.00
3/4 x 4	625	9861-107	25	4.00
3/4 x 5	625	9861-108	25	5.00
3/4 x 6	625	9861-109	25	6.00
3/4 x 8	625	9861-112	25	8.00
1 x CL	625	9861-133	25	1.50
1 x 2	625	9861-134	25	2.00
1 x 3	625	9861-135	25	3.00
1 x 4	625	9861-136	25	4.00
1 x 5	625	9861-137	25	5.00
1 x 6	625	9861-138	25	6.00
1 1/4 x CL	625	9861-170	25	1.63
1 1/4 x 2	625	9861-171	25	2.00
1 1/4 x 3	625	9861-172	25	3.00
1 1/4 x 4	625	9861-173	25	4.00
1 1/4 x 5	625	9861-174	25	5.00
1 1/4 x 6	625	9861-175	25	6.00
1 1/2 x CL	625	9861-213	25	1.75
1 1/2 x 2	625	9861-214	25	2.00
1 1/2 x 3	625	9861-215	25	3.00
1 1/2 x 4	625	9861-216	25	4.00
1 1/2 x 5	625	9861-217	25	5.00
1 1/2 x 6	625	9861-218	25	6.00
1-1/2 x 12	625	9861-221	25	12.00
2 x CL	625	9861-251	25	2.00

table continued on the next page



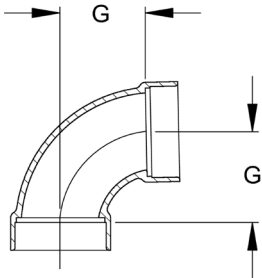
Size (inch)	P/L	Part No.	Pack Qty	L (inch)
2 x 2 1/2	625	9861-252	25	2.50
2 x 3	625	9861-253	25	3.00
2 x 4	625	9861-254	25	4.00
2 x 5	625	9861-255	25	5.00
2 x 6	625	9861-256	25	6.00
2 x 12	625	9861-259	25	12.00
2 1/2 x CL	625	9861-291	10	2.50
2 1/2 x 3	625	9861-292	10	3.00
2 1/2 x 4	625	9861-295	10	4.00
2 1/2 x 5	625	9861-296	10	5.00
2 1/2 x 6	625	9861-297	10	6.00
3 x CL	625	9861-338	10	2.63
3 x 3	625	9861-340	10	3.00
3 x 4	625	9861-341	10	4.00
3 x 5	625	9861-342	10	5.00
3 x 6	625	9861-343	10	6.00
4 x CL	625	9861-422	10	2.88
4 x 4	625	9861-423	10	4.00
4 x 5	625	9861-425	10	5.00
4 x 6	625	9861-426	10	6.00

ChlorFIT® Schedule 80 CPVC DWV Fittings



1/4 Bend Short Sweep (SxS) Schedule 80 CORZAN® CPVC

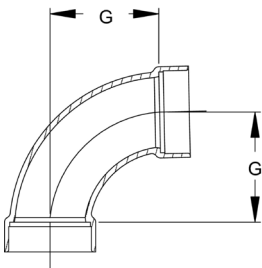
Size (inch)	P/L	Part No.	Pack Qty	G (inch)
1 1/2	625	9806-015SS	4	1.75
2	625	9806-020SS	4	2.31
3	625	9806-030SS	1	3.06
4	625	9806-040SS	1	3.88



1/4 Bend Long Sweep (SxS) - FAB Schedule 80 CORZAN® CPVC

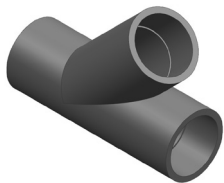


Size (inch)	P/L	Part No.	Pack Qty	G (inch)
1 1/2	A34	9806-015LSN	4	4.13
2	A34	9806-020LSN	4	4.75
3	A34	9806-030LSN	1	7.00
4	A34	9806-040LSN	1	9.00

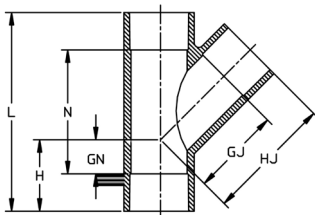


45° Wye (S x S x S) Schedule 80 CORZAN® CPVC

1-1/2" - 2" 235 psi @ 72°F (16.2 bar @ 22.7°C)
 3" - 6" 150 psi @ 72°F (10.3 bar @ 22.7°C)
 8" - 24" 100 psi @ 72°F (6.9 bar @ 22.7°C)



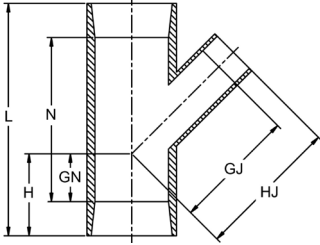
Size (inch)	P/L	Part No.	Pack Qty	GJ (inch)	GN (inch)	H (inch)	HJ (inch)	L (inch)	N (inch)	Design
1 1/2	625	9870-015	20	2.79	1.20	2.60	4.18	6.80	4.02	SL
2	625	9870-020	10	3.56	1.36	2.87	5.07	7.99	4.97	SL
3	625	9870-030	4	4.91	1.82	3.73	6.83	10.45	6.62	SL
4	625	9870-040	4	6.26	2.06	4.41	8.61	12.94	8.24	SL
6	625	9870-060	2	8.38	1.85	4.90	11.44	16.50	10.39	HS
10	A34	9875-100N	1	19.75	5.50	11.25	24.75	31.75	21.75	FAB
12	A34	9875-120N	1	22.63	6.50	12.50	28.63	37.50	25.50	FAB
14	A34	9875-140N	1	25.75	7.00	14.00	32.75	41.75	27.75	FAB
16	A34	9875-160N	1	28.88	7.75	16.00	36.88	47.25	31.25	FAB
18	A34	9875-180N	1	32.50	8.50	17.50	41.50	53.00	35.00	FAB
20	A34	9875-200N	1	35.50	9.50	19.50	45.50	58.75	38.75	FAB
24	A34	9875-240N	1	42.00	11.00	23.00	54.00	70.00	46.00	FAB



Reducing 45° Wye (S x S x S) Schedule 80 CORZAN® CPVC



2" 235 psi @ 72°F (16.2 bar @ 22.7° C)
 3" - 6" 150 psi @ 72°F (10.3 bar @ 22.7°C)
 8" - 24" 100 psi @ 72°F (6.9 bar @ 22.7°C)

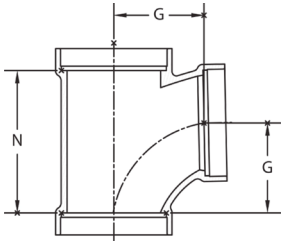


Size (inch)	P/L	Part No.	Pack Qty	GJ (inch)	GN (inch)	H (inch)	HJ (inch)	L (inch)	N (inch)	Design
2 x 1 1/2	625	9870-251FB	10	3.96	1.36	2.87	5.37	7.99	4.97	BUSH
3 x 1 1/2	625	9870-337FB	4	5.80	1.82	3.73	7.34	10.45	6.62	BUSH
3 x 2	625	9870-338FB	4	5.77	1.82	3.73	7.33	10.45	6.62	BUSH
4 x 2	625	9870-420FB	4	7.40	2.06	4.41	7.40	12.94	8.24	BUSH
4 x 3	625	9870-422FB	4	7.03	2.06	4.41	9.00	12.94	8.24	BUSH
6 x 2	625	9870-528FB	1	8.24	1.87	4.91	8.24	16.49	10.42	BUSH
6 x 3	625	9870-530FB	2	7.88	1.87	4.91	9.84	16.49	10.42	BUSH
6 x 4	625	9870-532	2	7.14	1.87	4.91	9.36	16.49	10.42	HS
8 x 3	625	9870-580FB	1	10.23	0.41	4.43	12.20	15.98	7.95	BUSH
8 x 4	625	9870-582FB	1	13.95	2.06	6.06	16.21	21.25	13.31	BUSH
8 x 6	625	9870-585FB	1	12.78	1.90	5.92	15.76	21.35	13.30	BUSH
10 x 4	A34	9875-623N	1	14.00	1.25	6.25	16.00	23.00	13.00	FAB
10 x 6	A34	9875-626N	1	16.13	2.75	7.50	19.13	26.00	16.00	FAB
10 x 8	A34	9875-628N	1	17.50	4.00	9.25	21.50	28.00	18.75	FAB
12 x 4	A34	9875-663N	1	15.50	0.50	6.00	17.50	25.75	13.75	FAB
12 x 6	A34	9875-666N	1	16.68	2.00	8.00	20.50	28.68	16.68	FAB
12 x 8	A34	9875-668N	1	19.00	3.50	9.50	23.00	31.50	19.50	FAB
12 x 10	A34	9875-670N	1	21.25	5.00	11.00	26.25	34.50	22.50	FAB
14 x 4	A34	9875-696N	1	16.25	0.25	7.25	18.25	28.25	14.25	FAB
14 x 6	A34	9875-698N	1	18.50	1.75	8.63	21.50	31.25	17.25	FAB
14 x 8	A34	9875-700N	1	19.75	3.00	10.00	23.75	34.00	20.00	FAB
14 x 10	A34	9875-702N	1	22.00	4.50	11.50	27.00	37.00	23.00	FAB
14 x 12	A34	9875-704N	1	23.50	6.00	13.00	29.50	39.75	25.75	FAB
16 x 4	A34	9875-730N	1	17.75	-0.75	7.50	19.75	31.00	15.00	FAB
16 x 6	A34	9875-732N	1	19.88	1.00	9.00	22.88	34.00	18.00	FAB
16 x 8	A34	9875-734N	1	21.25	2.50	10.25	25.25	36.75	20.75	FAB
16 x 10	A34	9875-736N	1	23.50	4.00	12.00	28.50	39.75	23.75	FAB
16 x 12	A34	9875-738N	1	25.00	5.50	14.25	31.00	42.75	26.75	FAB
16 x 14	A34	9875-740N	1	27.25	6.25	15.25	34.25	44.50	28.50	FAB
18 x 4	A34	9875-784N	1	19.00	-1.25	8.00	21.00	34.00	16.00	FAB
18 x 6	A34	9875-786N	1	21.25	0.50	9.50	24.25	37.00	19.00	FAB
18 x 8	A34	9875-788N	1	22.75	2.00	11.00	26.75	39.75	21.75	FAB
18 x 10	A34	9875-790N	1	25.00	3.50	12.50	30.00	42.75	24.75	FAB
18 x 12	A34	9875-792N	1	26.25	4.75	13.75	32.50	45.50	27.50	FAB
18 x 14	A34	9875-794N	1	28.75	5.75	14.75	35.75	48.50	29.50	FAB
18 x 16	A34	9875-796N	1	30.25	7.25	16.00	38.25	50.25	32.25	FAB
20 x 4	A34	9875-814N	1	20.50	-1.75	8.50	22.50	36.75	16.75	FAB
20 x 6	A34	9875-816N	1	22.75	-0.25	10.00	25.75	39.75	19.75	FAB
20 x 8	A34	9875-818N	1	24.25	1.50	11.50	28.25	42.75	22.75	FAB
20 x 10	A34	9875-820N	1	26.50	3.00	13.00	31.50	45.75	25.75	FAB
20 x 12	A34	9875-822N	1	28.00	4.25	14.25	34.00	48.50	28.50	FAB
20 x 14	A34	9875-824N	1	30.25	5.25	15.00	37.25	50.25	30.25	FAB
20 x 16	A34	9875-826N	1	31.75	6.50	16.50	39.75	53.00	33.00	FAB
20 x 18	A34	9875-828N	1	34.00	8.00	18.00	43.00	56.00	36.00	FAB
24 x 4	A34	9875-904N	1	23.25	-3.00	9.25	25.25	42.50	18.50	FAB
24 x 6	A34	9875-906N	1	25.50	-1.50	10.75	28.50	45.50	21.54	FAB
24 x 8	A34	9875-908N	1	27.00	0.00	12.00	31.00	48.25	24.25	FAB
24 x 10	A34	9875-910N	1	29.25	1.75	13.50	34.25	51.25	27.25	FAB
24 x 12	A34	9875-912N	1	30.50	3.25	15.00	36.60	54.25	30.25	FAB
24 x 14	A34	9875-914N	1	33.00	4.00	16.00	40.00	56.00	32.00	FAB
24 x 16	A34	9875-916N	1	34.50	5.50	17.50	42.50	58.75	34.75	FAB
24 x 18	A34	9875-918N	1	36.75	6.75	18.75	45.75	61.50	37.50	FAB
24 x 20	A34	9875-920N	1	38.25	8.25	20.25	48.25	64.50	40.50	FAB



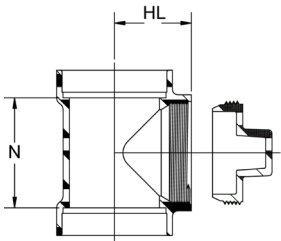
Sanitary Tee (SxSxS) Schedule 80 CORZAN® CPVC

Size (inch)	P/L	Part No.	Pack Qty	G (inch)	N (inch)
1 1/2	625	37S461501	5	1.75	2.75
2	625	37S461502	5	2.31	3.69
3	625	37S461503	5	3.06	4.88
4	625	37S461504	5	3.88	6.13

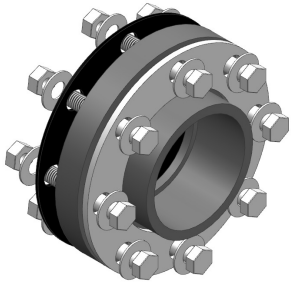


Cleanout Tee with Plug (SxSxFPT) Schedule 80 CORZAN® CPVC

Size (inch)	P/L	Part No.	Pack Qty	HL (inch)	N (inch)
1 1/2	625	37S461101	2	2.07	1.80
2	625	37S461102	2	2.35	2.32
3	625	37S461103	2	3.51	3.63
4	625	37S461104	2	4.07	4.25



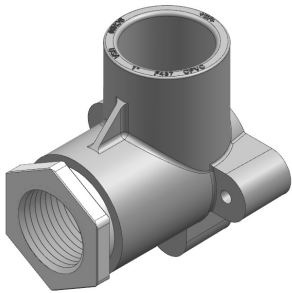
ChlorFIT® Schedule 80 CPVC Metal Transition Fittings



Full Pressure Flange Kit Schedule 80 CORZAN® CPVC

- Kit includes: 1 Van Stone Flange, 1 304SS Backing Ring, 1 Garlock Stress Saver XP Gasket, and appropriate number of bolts, nuts, and washers depending on the size.

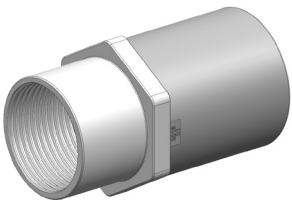
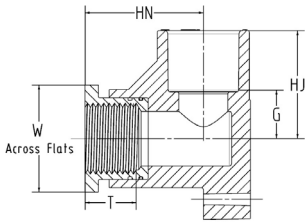
Size (inch)	P/L	Part No.	Pack Qty	Max Pressure at 73°F (22.7°C) (psi)	Weight (lb)
2 ½	607	37Z000267	1	420	3.44
3	607	37Z000268	1	370	3.81
4	607	37Z000269	1	320	6.94
6	607	37Z000270	1	280	9.17



Drop Ear (SxFPT) Schedule 80 CORZAN® CPVC-to-316SS

- 400 psi @ 73°F (27.6 bar @ 22.7°C)

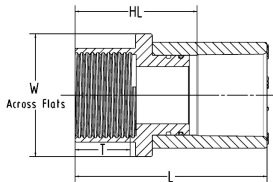
Size (inch)	P/L	Part No.	Pack Qty	G (inch)	HJ (inch)	HN (inch)	T (inch)	W (inch)
½	A35	9832-005SS	5	0.62	1.50	1.52	0.90	1.125
¾	A35	9832-007SS	5	0.76	1.77	1.65	0.95	1.313
1	A35	9832-010SS	5	0.87	2.00	2.20	1.00	1.750

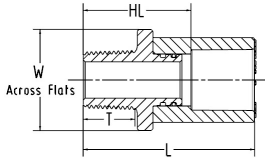
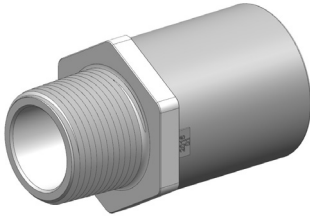


Female Adapter (SxFPT) Schedule 80 CORZAN® CPVC-to-316SS

- 400 psi @ 73°F (27.6 bar @ 22.7°C)

Size (inch)	P/L	Part No.	Pack Qty	HL (inch)	L (inch)	T (inch)	W (inch)
½	A35	9868-005SS	10	1.49	2.38	0.84	1.25
¾	A35	9868-007SS	10	1.67	2.68	0.92	1.50
1	A35	9868-010SS	6	1.98	3.11	0.96	1.75
1 ¼	A35	9868-012SS	5	2.19	3.45	1.04	2.12
1 ½	A35	9868-015SS	5	2.35	3.73	1.04	2.50
2	A35	9868-020SS	4	2.63	4.14	1.29	3.00





Male Adapter (SxMPT) Schedule 80 CORZAN® CPVC-to-316SS

- 400 psi @ 73°F (27.6 bar @ 22.7°C)

Size (inch)	P/L	Part No.	Pack Qty	HL (inch)	L (inch)	T (inch)	W (inch)
½	A35	9869-005SS	10	1.49	2.38	0.70	1.25
¾	A35	9869-007SS	10	1.67	2.68	0.74	1.50
1	A35	9869-010SS	6	1.98	3.11	0.92	1.75
1 ¼	A35	9869-012SS	5	2.19	3.45	0.95	2.12
1 ½	A35	9869-015SS	5	2.35	3.73	0.99	2.50
2	A35	9869-020SS	4	2.64	4.14	1.03	3.00



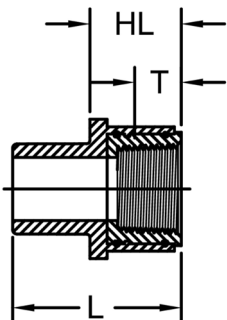
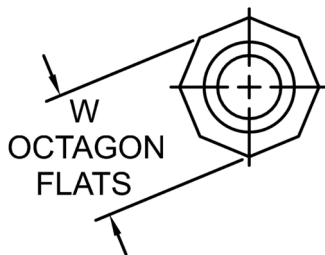
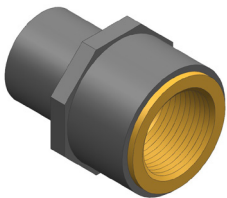
Metal Union End Connectors for Type 375 Union or Ball Valve (316 SS)

- Not Fully Pressure Rated**
 150 psi @ 73°F (10.3 bar @ 22.7°C)
 Union Sold Separately

Size (inch)	P/L	Part No.	Pack Qty
½	A35	37X003314	1
¾	A35	37X003315	1
1	A35	37X003316	1
1 ¼	A35	37X003317	1
1 ½	A35	37X003318	1
2	A35	37X003319	1

Transition Fittings (SPG x FPT) Schedule 80 CORZAN® CPVC-to-Brass

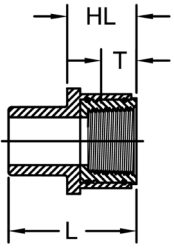
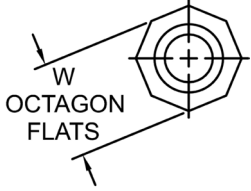
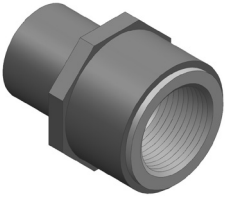
- 150 psi @ 73°F (10.3 bar @ 22.7°C)



Size (inch)	P/L	Part No.	Pack Qty	HL (inch)	L (inch)	T (inch)	W (inch)
½	A35	9878-005BR	25	1.02	1.75	0.70	1.27
¾	A35	9878-007BR	15	1.07	2.07	0.74	1.52
1	A35	9878-010BR	15	1.32	2.44	0.81	1.93
1 ¼	A35	9878-012BR	15	1.38	2.49	0.85	2.29
1 ½	A35	9878-015BR	10	1.44	2.74	0.87	2.60
2	A35	9878-020BR	5	1.43	2.81	1.11	3.36

Transition Fittings (SPG x FPT) Schedule 80 CORZAN® CPVC-to-316SS

150 psi @ 73°F (10.3 bar @ 22.7°C)

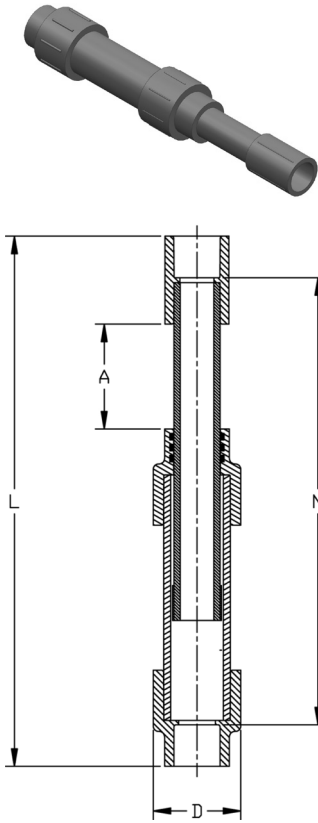


Size (inch)	P/L	Part No.	Pack Qty	HL (inch)	L (inch)	T (inch)	W (inch)
½	A35	9878-005SS	25	1.02	1.75	0.70	1.27
¾	A35	9878-007SS	15	1.07	2.07	0.74	1.52
1	A35	9878-010SS	15	1.32	2.44	0.81	1.93
1 ¼	A35	9878-012SS	15	1.38	2.49	0.85	2.29
1 ½	A35	9878-015SS	10	1.45	2.74	0.87	2.60
2	A35	9878-020SS	5	1.43	2.81	1.11	3.36

ChlorFIT® Schedule 80 CPVC Expansion Joints

Expansion Joint 6" Travel (S x S) Schedule 80 CORZAN® CPVC

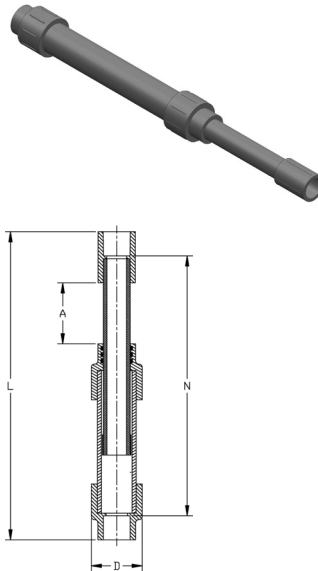
To order SxSPG add "P" to end of part number.
To order FxF add "F" to end of part number.



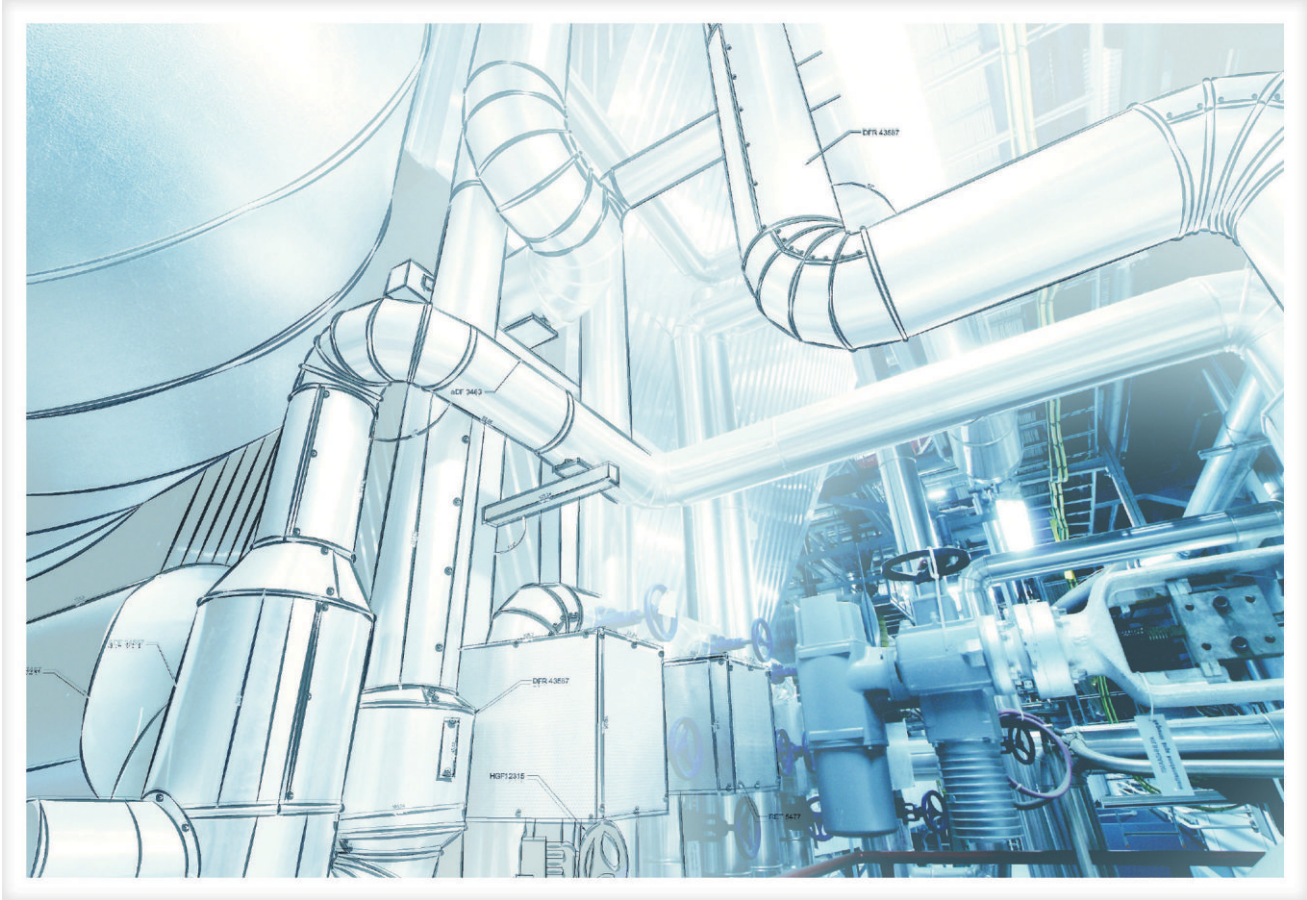
Size (inch)	P/L	EPDM Part No.	FKM Part No.	A (inch)	D (inch)	L (inch)	N (inch)
½	634	9826-005X6	9836-005X6	3.00	1.86	13.97	12.17
¾	634	9826-007X6	9836-007X6	3.00	2.23	14.44	12.40
1	634	9826-010X6	9836-010X6	3.00	2.50	14.98	12.69
1 ¼	634	9826-012X6	9836-012X6	3.00	2.89	15.56	12.98
1 ½	634	9826-015X6	9836-015X6	3.00	3.51	16.00	13.21
2	634	9826-020X6	9836-020X6	3.00	4.40	18.05	15.01
3	634	9826-030X6	9836-030X6	3.00	5.52	19.75	16.00
4	634	9826-040X6	9836-040X6	3.00	7.92	28.29	23.76
6	634	9826-060X6	9836-060X6	3.00	9.80	27.79	21.73
8	634	9826-080X6	9836-080X6	3.00	10.75	25.35	17.31
10	634	9826-100X6	9836-100X6	3.00	12.75	29.64	19.60

Expansion Joint 12" Travel (S x S) Schedule 80 CORZAN® CPVC

To order SxSPG add "P" to end of part number.
To order FxF add "F" to end of part number.

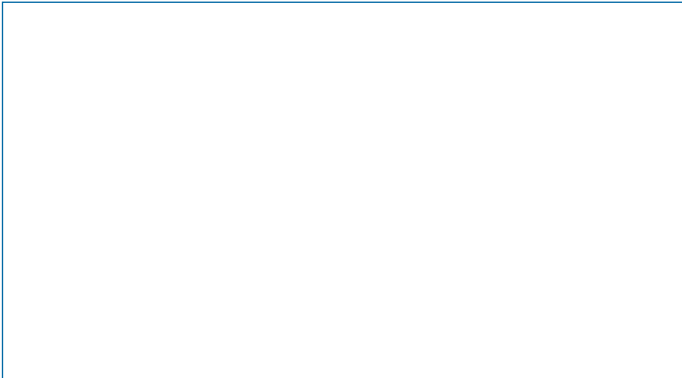


Size (inch)	P/L	EPDM Part No.	FKM Part No.	A (inch)	D (inch)	L (inch)	N (inch)
½	634	9826-005X12	9836-005X12	6.00	1.86	23.10	21.30
¾	634	9826-007X12	9836-007X12	6.00	2.23	23.57	21.52
1	634	9826-010X12	9836-010X12	6.00	2.50	24.11	21.81
1 ¼	634	9826-012X12	9836-012X12	6.00	2.89	24.69	22.11
1 ½	634	9826-015X12	9836-015X12	6.00	3.51	25.12	22.34
2	634	9826-020X12	9836-020X12	6.00	4.40	27.05	24.01
3	634	9826-030X12	9836-030X12	6.00	5.52	28.75	25.00
4	634	9826-040X12	9836-040X12	6.00	7.92	37.28	32.76
6	634	9826-060X12	9836-060X12	6.00	9.80	26.79	30.73
8	634	9826-080X12	9836-080X12	6.00	10.75	28.35	20.31
10	634	9826-100X12	9836-100X12	6.00	12.75	32.64	22.60



GF Africa **Contact Details**

- T. + 27 21 702 0059
- E. info@gf-africa.com
- W. www.gf-africa.com



Authorised Distributor

